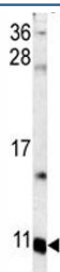


S100A6 Antibody (F50333)

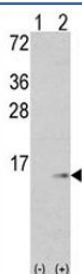
Catalog No.	Formulation	Size
F50333-0.4ML	In 1X PBS, pH 7.4, with 0.09% sodium azide	0.4 ml
F50333-0.08ML	In 1X PBS, pH 7.4, with 0.09% sodium azide	0.08 ml

[Bulk quote request](#)

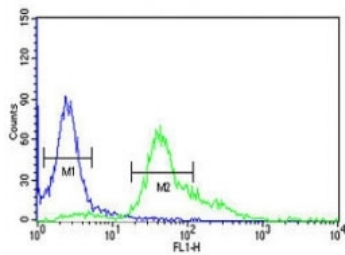
Availability	1-3 business days
Species Reactivity	Human, Mouse
Format	Purified
Host	Rabbit
Clonality	Polyclonal (rabbit origin)
Isotype	Rabbit Ig
Purity	Purified
UniProt	P06703
Localization	Nuclear, cytoplasmic
Applications	Western Blot : 1:1000 Flow Cytometry : 1:10-1:50
Limitations	This S100A6 antibody is available for research use only.



Western blot analysis of S100A6 antibody and mouse lung tissue lysate.
Expected/observed molecular weight ~10kDa.



Western blot analysis of S100A6 antibody and 293 cell lysate (2 ug/lane) either nontransfected (Lane 1) or transiently transfected with the S100A6 gene (2).



S100A6 antibody flow cytometric analysis of HeLa cells (right histogram) compared to a negative control (left histogram). FITC-conjugated goat-anti-rabbit secondary Ab was used for the analysis.

Description

S100A6 is a member of the S100 family of proteins containing 2 EF-hand calcium-binding motifs. S100 proteins are localized in the cytoplasm and/or nucleus of a wide range of cells, and involved in the regulation of a number of cellular processes such as cell cycle progression and differentiation. This protein may function in stimulation of Ca^{2+} -dependent insulin release, stimulation of prolactin secretion, and exocytosis.

Application Notes

Titration of the S100A6 antibody may be required due to differences in protocols and secondary/substrate sensitivity.

Immunogen

A portion of amino acids 37-67 from the human protein was used as the immunogen for this S100A6 antibody.

Storage

Aliquot the S100A6 antibody and store frozen at -20°C or colder. Avoid repeated freeze-thaw cycles.