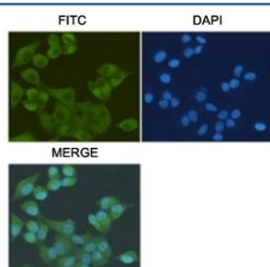


## S100A10 Antibody [clone 6F4-E6-D5-C10] (F54052)

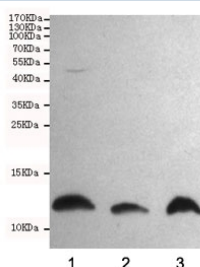
Catalog No.	Formulation	Size
F54052-0.1ML	In PBS with 50% glycerol and 0.09% sodium azide	0.1 ml

**Bulk quote request**

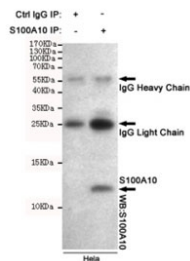
<b>Availability</b>	1-3 business days
<b>Species Reactivity</b>	Human, Mouse, Rat
<b>Format</b>	Purified
<b>Clonality</b>	Monoclonal (mouse origin)
<b>Isotype</b>	Mouse IgG2a
<b>Clone Name</b>	6F4-E6-D5-C10
<b>Purity</b>	Protein G affinity
<b>UniProt</b>	P08207
<b>Applications</b>	Western Blot : 1:1000 ICC/IF : 1:200 Immunoprecipitation : 1:100
<b>Limitations</b>	This S100A10 antibody is available for research use only.



ICC/IF staining of HeLa cells, fixed with 4% Paraformaldehyde, using S100A10 antibody at 1:200.



Western blot testing of 1) rat C6, 2) mouse NIH3T3 and 3) human HeLa cell lysates using S100A10 antibody at 1:1000. Predicted molecular weight ~11 kDa.



Immunoprecipitation of S100A10 from HeLa cell lysate, and subsequent western blot testing, using S100A10 antibody.

## Description

Because S100A10 induces the dimerization of ANXA2/p36, it may function as a regulator of protein phosphorylation in that the ANXA2 monomer is the preferred target (in vitro) of tyrosine-specific kinase.

## Application Notes

The stated application concentrations are suggested starting points. Titration of the S100A10 antibody may be required due to differences in protocols and secondary/substrate sensitivity.

## Immunogen

A human recombinant partial protein was used as the immunogen for this S100A10 antibody.

## Storage

Store the S100A10 antibody at -20oC.