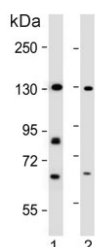


Rubicon Antibody / RUBCN / BARON (F54720)

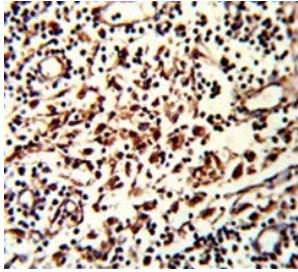
Catalog No.	Formulation	Size
F54720-0.4ML	In 1X PBS, pH 7.4, with 0.09% sodium azide	0.4 ml
F54720-0.08ML	In 1X PBS, pH 7.4, with 0.09% sodium azide	0.08 ml

Bulk quote request

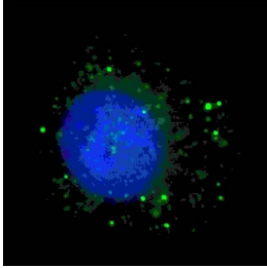
Availability	1-3 business days
Species Reactivity	Human
Format	Purified
Clonality	Polyclonal (rabbit origin)
Isotype	Rabbit Ig
Purity	Antigen affinity purified
UniProt	Q92622
Localization	Cytoplasmic
Applications	Western Blot : 1:500-1:2000 Flow Cytometry : 1:25 (1x10e6 cells) Immunohistochemistry (FFPE) : 1:25 Immunofluorescence : 1:25
Limitations	This Rubicon antibody is available for research use only.



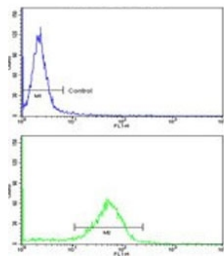
Western blot testing of human 1) K562 and 2) HEK293 cell lysate with Rubicon antibody.
Expected molecular weight ~130 kDa.



IHC testing of FFPE human lymph tissue with Rubicon antibody. HIER: steam section in pH6 citrate buffer for 20 min and allow to cool prior to staining.



Immunofluorescent staining of fixed and permeabilized human U-251 cells (treated with 50 uM Chloroquine for 16 hr) with Rubicon antibody (green) and Hoechst 33342 nuclear stain (blue).



Flow cytometry testing of human MDA-231 cells with Rubicon antibody; Blue=isotype control, Green= Rubicon antibody.

Description

Inhibits PIK3C3 activity; under basal conditions negatively regulates PI3K complex II (PI3KC3-C2) function in autophagy. Negatively regulates endosome maturation and degradative endocytic trafficking and impairs autophagosome maturation process. Can sequester UVRAG from association with a class C Vps complex (possibly the HOPS complex) and negatively regulates Rab7 activation. [UniProt]

Application Notes

The stated application concentrations are suggested starting points. Titration of the Rubicon antibody may be required due to differences in protocols and secondary/substrate sensitivity.

Immunogen

A portion of amino acids 241-271 from the human protein was used as the immunogen for the Rubicon antibody.

Storage

Aliquot the Rubicon antibody and store frozen at -20oC or colder. Avoid repeated freeze-thaw cycles.

