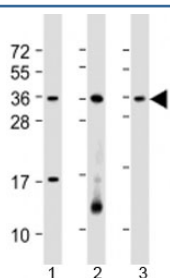


## RSPO1 Antibody / R-spondin-1 (F53869)

Catalog No.	Formulation	Size
F53869-0.2ML	In 1X PBS, pH 7.4, with 0.09% sodium azide	0.2 ml
F53869-0.05ML	In 1X PBS, pH 7.4, with 0.09% sodium azide	0.05 ml

[Bulk quote request](#)

<b>Availability</b>	1-3 business days
<b>Species Reactivity</b>	Human
<b>Format</b>	Antigen affinity purified
<b>Host</b>	Rabbit
<b>Clonality</b>	Polyclonal (rabbit origin)
<b>Isotype</b>	Rabbit Ig
<b>Purity</b>	Antigen affinity
<b>UniProt</b>	Q2MKA7
<b>Applications</b>	Western Blot : 1:1000-2000
<b>Limitations</b>	This RSPO1 antibody is available for research use only.



Western blot testing of human 1) HL-60, 2) Jurkat and 3) K562 cell lysate with RSPO1 antibody at 1:2000. Predicted molecular weight: 29 kDa.

## Description

R-spondin-1 is an activator of the canonical Wnt signaling pathway by acting as a ligand for LGR4-6 receptors. Upon binding to LGR4-6 (LGR4, LGR5 or LGR6), LGR4-6 associate with phosphorylated LRP6 and frizzled receptors that are activated by extracellular Wnt receptors, triggering the canonical Wnt signaling pathway to increase expression of target genes. Also regulates the canonical Wnt/beta-catenin-dependent pathway and non-canonical Wnt signaling by acting as an inhibitor of ZNRF3, an important regulator of the Wnt signaling pathway. Acts as a ligand for frizzled FZD8 and LRP6. May negatively regulate the TGF-beta pathway. Has a essential roles in ovary determination.

## Application Notes

Titration of the RSPO1 antibody may be required due to differences in protocols and secondary/substrate sensitivity.

## Immunogen

A portion of amino acids 206-240 from the human protein was used as the immunogen for the RSPO1 antibody.

## Storage

Aliquot the RSPO1 antibody and store frozen at -20oC or colder. Avoid repeated freeze-thaw cycles.