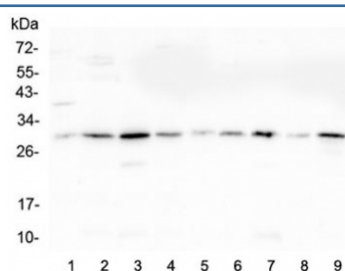


## RPS3 Antibody (RQ4530)

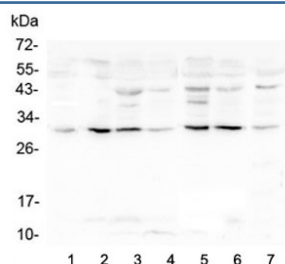
| Catalog No. | Formulation   | Size   |
|-------------|---|--------|
| RQ4530      | 0.5mg/ml if reconstituted with 0.2ml sterile DI water | 100 ug |

**Bulk quote request**

|                           |   |
|---------------------------|---|
| <b>Availability</b>       | 1-3 business days   |
| <b>Species Reactivity</b> | Human, Mouse, Rat   |
| <b>Format</b>             | Antigen affinity purified   |
| <b>Host</b>               | Rabbit  |
| <b>Clonality</b>          | Polyclonal (rabbit origin)  |
| <b>Isotype</b>            | Rabbit IgG  |
| <b>Purity</b>             | Antigen affinity  |
| <b>Buffer</b>             | Lyophilized from 1X PBS with 2% Trehalose and 0.025% sodium azide |
| <b>UniProt</b>            | P23396  |
| <b>Applications</b>       | Western Blot : 0.5-1ug/ml   |
| <b>Limitations</b>        | This RPS3 antibody is available for research use only.            |



Western blot testing of 1) rat liver, 2) rat lung, 3) rat pancreas, 4) rat stomach, 5) mouse lung, 6) mouse liver, 7) mouse pancreas, 8) mouse stomach and 9) mouse small intestine lysate with RPS3 antibody at 0.5ug/ml. Predicted molecular weight ~27 kDa.



Western blot testing of human 1) placenta 2) HL-60, 3) Caco-2, 4) T-47D, 5) K562, 6) HepG2 and 7) A431 lysate with RPS3 antibody at 0.5ug/ml. Predicted molecular weight ~27 kDa.

## Description

40S ribosomal protein S3 is a protein that in humans is encoded by the RPS3 gene. Ribosomes, the organelles that catalyze protein synthesis, consist of a small 40S subunit and a large 60S subunit. Together these subunits are composed of 4 RNA species and approximately 80 structurally distinct proteins. This gene encodes a ribosomal protein that is a component of the 40S subunit, where it forms part of the domain where translation is initiated. The protein belongs to the S3P family of ribosomal proteins. Studies of the mouse and rat proteins have demonstrated that the protein has an extraribosomal role as an endonuclease involved in the repair of UV-induced DNA damage. The protein appears to be located in both the cytoplasm and nucleus but not in the nucleolus. Higher levels of expression of this gene in colon adenocarcinomas and adenomatous polyps compared to adjacent normal colonic mucosa have been observed. This gene is co-transcribed with the small nucleolar RNA genes U15A and U15B, which are located in its first and fifth introns, respectively. As is typical for genes encoding ribosomal proteins, there are multiple processed pseudogenes of this gene dispersed through the genome. Multiple alternatively spliced transcript variants encoding different isoforms have been found for this gene.

## Application Notes

The stated application concentrations are suggested starting amounts. Titration of the RPS3 antibody may be required due to differences in protocols and secondary/substrate sensitivity.

## Immunogen

Amino acids RKFVADGIFKAELNEFLTRELAED were used as the immunogen for this RPS3 antibody.

## Storage

After reconstitution, the RPS3 antibody can be stored for up to one month at 4oC. For long-term, aliquot and store at -20oC. Avoid repeated freezing and thawing.