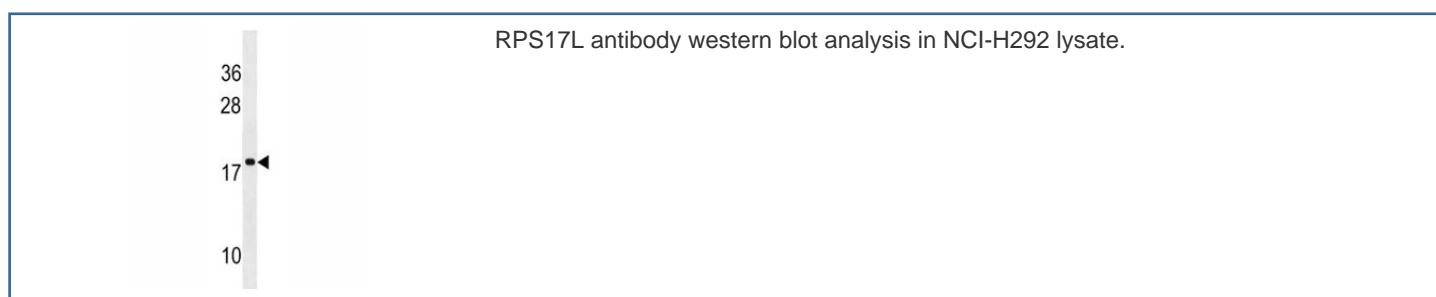


## RPS17L Antibody (F40050)

Catalog No.	Formulation	Size
F40050-0.4ML	In 1X PBS, pH 7.4, with 0.09% sodium azide	0.4 ml
F40050-0.08ML	In 1X PBS, pH 7.4, with 0.09% sodium azide	0.08 ml

[Bulk quote request](#)

<b>Availability</b>	1-3 business days
<b>Species Reactivity</b>	Human
<b>Predicted Reactivity</b>	Mouse, Rat, Bovine, Pig, Chicken, Hamster
<b>Format</b>	Antigen affinity purified
<b>Host</b>	Rabbit
<b>Clonality</b>	Polyclonal (rabbit origin)
<b>Isotype</b>	Rabbit Ig
<b>Purity</b>	Antigen affinity
<b>UniProt</b>	P0CW22
<b>Applications</b>	Western Blot : 1:1000
<b>Limitations</b>	This RPS17L antibody is available for research use only.



## Description

Ribosomes, the organelles that catalyze protein synthesis, consist of a small 40S subunit and a large 60S subunit. Together these subunits are composed of 4 RNA species and approximately 80 structurally distinct proteins. This gene encodes a ribosomal protein that is a component of the 40S subunit. The protein belongs to the S17E family of ribosomal proteins. It is located in the cytoplasm. As is typical for genes encoding ribosomal proteins, there are multiple processed pseudogenes of this gene dispersed through the genome.

## Application Notes

Titration of the RPS17L antibody may be required due to differences in protocols and secondary/substrate sensitivity.

## Immunogen

A portion of amino acids 77-103 from the human protein was used as the immunogen for this RPS17L antibody.

## Storage

Aliquot the RPS17L antibody and store frozen at -20oC or colder. Avoid repeated freeze-thaw cycles.