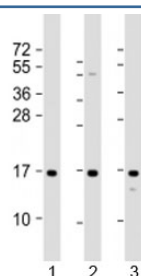


RPLP1 Antibody / RRP1 (F53923)

Catalog No.	Formulation	Size
F53923-0.2ML	In 1X PBS, pH 7.4, with 0.09% sodium azide	0.2 ml
F53923-0.05ML	In 1X PBS, pH 7.4, with 0.09% sodium azide	0.05 ml

[Bulk quote request](#)

Availability	1-3 business days
Species Reactivity	Human
Predicted Reactivity	Mouse, Rat, Bovine, Chicken
Format	Antigen affinity purified
Host	Rabbit
Clonality	Polyclonal (rabbit origin)
Isotype	Rabbit Ig
Purity	Antigen affinity
UniProt	P05386
Applications	Western Blot : 1:1000-2000
Limitations	This RPLP1 antibody is available for research use only.



Western blot testing of human 1) A431, 2) HeLa and 3) U-2OS cell lysate with RPLP1 antibody at 1:2000. Predicted molecular weight: 12 kDa.

Description

60S acidic Ribosomal protein P1 plays an important role in the elongation step of protein synthesis.

Application Notes

Titration of the RPLP1 antibody may be required due to differences in protocols and secondary/substrate sensitivity.

Immunogen

A portion of amino acids 18-49 from the human protein was used as the immunogen for the RPLP1 antibody.

Storage

Aliquot the RPLP1 antibody and store frozen at -20oC or colder. Avoid repeated freeze-thaw cycles.