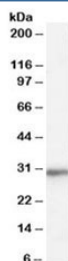


RPL8 Antibody (R34345)

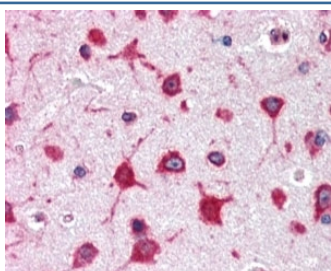
Catalog No.	Formulation	Size
R34345-100UG	0.5 mg/ml in 1X TBS, pH7.3, with 0.5% BSA (US sourced) and 0.02% sodium azide	100 ug

[Bulk quote request](#)

Availability	1-3 business days
Species Reactivity	Human
Predicted Reactivity	Dog, Mouse, Rat
Format	Antigen affinity purified
Clonality	Polyclonal (goat origin)
Isotype	Goat Ig
Purity	Antigen affinity
Gene ID	6132
Applications	Western Blot : 0.01-0.03ug/ml Immunohistochemistry (FFPE) : 2-4ug/ml ELISA (peptide) LOD : 1:128000
Limitations	This RPL8 antibody is available for research use only.



Western blot testing of HepG2 cell lysate with RPL8 antibody at 0.01ug/ml. Predicted molecular weight: ~28kDa.



IHC staining of FFPE human cerebral cortex with RPL8 antibody at 2.5ug/ml. HIER: steamed with pH6 citrate buffer, AP-staining.

Description

Additional name(s) for this target protein: Ribosomal protein L8

Application Notes

Optimal dilution of the RPL8 antibody should be determined by the researcher.

Immunogen

Amino acids KAGRAYHKYKAKRNC were used as the immunogen for this RPL8 antibody.

Storage

Aliquot and store the RPL8 antibody at -20oC.