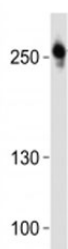


ROS1 Antibody (F52830)

Catalog No.	Formulation	Size
F52830-0.4ML	In 1X PBS, pH 7.4, with 0.09% sodium azide	0.4 ml
F52830-0.08ML	In 1X PBS, pH 7.4, with 0.09% sodium azide	0.08 ml

[Bulk quote request](#)

Availability	1-3 business days
Species Reactivity	Human
Format	Antigen affinity purified
Clonality	Polyclonal (rabbit origin)
Isotype	Rabbit Ig
Purity	Antigen affinity
UniProt	P08922
Applications	Western Blot : 1:1000
Limitations	This ROS1 antibody is available for research use only.



Western blot analysis of lysate from U-87 MG cell line using ROS1 antibody at 1:1000.

Description

Orphan receptor tyrosine kinase (RTK) that plays a role in epithelial cell differentiation and regionalization of the proximal epididymal epithelium. May activate several downstream signaling pathways related to cell differentiation, proliferation, growth and survival including the PI3 kinase-mTOR signaling pathway. Mediates the phosphorylation of PTPN11, an activator of this pathway. May also phosphorylate and activate the transcription factor STAT3 to control anchorage-independent cell growth. Mediates the phosphorylation and the activation of VAV3, a guanine nucleotide exchange factor regulating cell morphology. May activate other downstream signaling proteins including AKT1, MAPK1, MAPK3, IRS1 and PLCG2.

Application Notes

Titration of the ROS1 antibody may be required due to differences in protocols and secondary/substrate sensitivity.

Immunogen

This ROS1 antibody was produced from a rabbit immunized with a KLH conjugated synthetic peptide between 1744-1777 amino acids from the C-terminal region of human ROS1.

Storage

Aliquot the ROS1 antibody and store frozen at -20oC or colder. Avoid repeated freeze-thaw cycles.