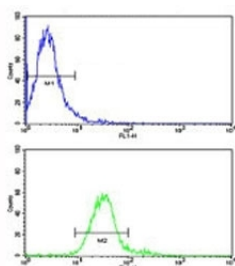


ROR1 Antibody (F50666)

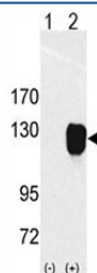
Catalog No.	Formulation	Size
F50666-0.4ML	In 1X PBS, pH 7.4, with 0.09% sodium azide	0.4 ml
F50666-0.08ML	In 1X PBS, pH 7.4, with 0.09% sodium azide	0.08 ml

[Bulk quote request](#)

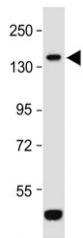
Availability	1-3 business days
Species Reactivity	Human
Format	Purified
Host	Rabbit
Clonality	Polyclonal (rabbit origin)
Isotype	Rabbit Ig
Purity	Purified
UniProt	Q01973
Applications	Western Blot : 1:1000 Flow Cytometry : 1:10-1:50
Limitations	This ROR1 antibody is available for research use only.



Flow cytometric analysis of NCI-H460 cells using ROR1 antibody (bottom histogram) compared to a negative control (top histogram). FITC-conjugated goat-anti-rabbit secondary Ab was used for the analysis.



Western blot analysis of ROR1 antibody and 293 cell lysate (2 ug/lane) either nontransfected (Lane 1) or transiently transfected with the ROR1 gene (2). Predicted molecular weight of ROR1 isoforms: 105 kDa and 130 kDa.



Western blot testing of mouse NIH 3T3 cell lysate with ROR1 antibody. Predicted molecular weight of ROR1 isoforms: 105 kDa and 130 kDa.

Description

ROR1 is a receptor protein tyrosine kinase whose cellular role has not been determined. It is a type I membrane protein and belongs to the ROR subfamily of cell surface receptors. Studies of a similar protein in mouse suggest that this protein may interact with another receptor protein tyrosine kinase and may be involved in skeletal and cardiac development.

Application Notes

Titration of the ROR1 antibody may be required due to differences in protocols and secondary/substrate sensitivity.

Immunogen

A portion of amino acids 32-62 from the human protein was used as the immunogen for this ROR1 antibody.

Storage

Aliquot the ROR1 antibody and store frozen at -20oC or colder. Avoid repeated freeze-thaw cycles.