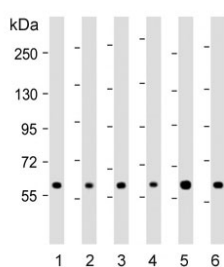


RNF31 Antibody (F54730)

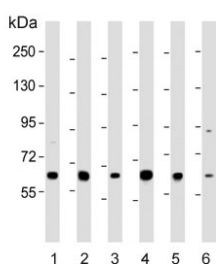
| Catalog No. | Formulation | Size |
|---------------|--|---------|
| F54730-0.4ML | In 1X PBS, pH 7.4, with 0.09% sodium azide | 0.4 ml |
| F54730-0.08ML | In 1X PBS, pH 7.4, with 0.09% sodium azide | 0.08 ml |

[Bulk quote request](#)

| | |
|---------------------------|---|
| Availability | 1-3 business days |
| Species Reactivity | Human |
| Format | Purified |
| Clonality | Polyclonal (rabbit origin) |
| Isotype | Rabbit Ig |
| Purity | Antigen affinity purified |
| UniProt | Q96EP0 |
| Applications | Western Blot : 1:500-1:1000 |
| Limitations | This RNF31 antibody is available for research use only. |



Western blot testing of human 1) 293T, 2) CCRF-CEM, 3) HeLa, 4) Jurkat, 5) MDA-MB-453 and 6) MCF7 cell lysate with RNF31 antibody. Predicted molecular weight ~120 kDa (isoform 1), ~58 kDa (isoform 2) and ~102 kDa (isoform 3).



Western blot testing of human 1) 293T, 2) CCRF-CEM, 3) HeLa, 4) HepG2, 5) Jurkat and 6) MCF7 cell lysate with RNF31 antibody. Predicted molecular weight ~120 kDa (isoform 1), ~58 kDa (isoform 2) and ~102 kDa (isoform 3).

Description

The protein encoded by this gene contains a RING finger, a motif present in a variety of functionally distinct proteins and known to be involved in protein-DNA and protein-protein interactions.

Application Notes

The stated application concentrations are suggested starting points. Titration of the RNF31 antibody may be required due to differences in protocols and secondary/substrate sensitivity.

Immunogen

A portion of amino acids 955-983 from the human protein was used as the immunogen for the RNF31 antibody.

Storage

Aliquot the RNF31 antibody and store frozen at -20oC or colder. Avoid repeated freeze-thaw cycles.