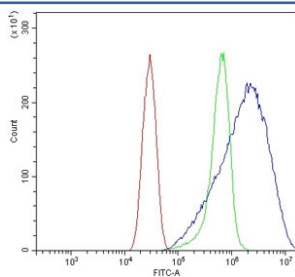


RNase L Antibody / Rnasel (RQ6435)

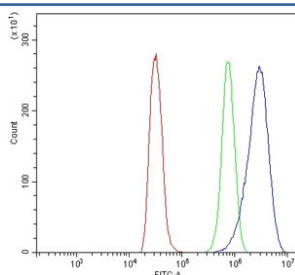
Catalog No.	Formulation	Size
RQ6435	0.5mg/ml if reconstituted with 0.2ml sterile DI water	100 ug

Bulk quote request

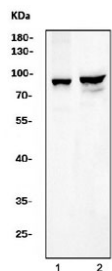
Availability	1-3 business days
Species Reactivity	Mouse, Rat
Format	Purified
Host	Rabbit
Clonality	Polyclonal (rabbit origin)
Isotype	Rabbit IgG
Purity	Antigen affinity purified
Buffer	Lyophilized from 1X PBS with 2% Trehalose
UniProt	Q05921
Applications	Western Blot : 0.5-1ug/ml Flow Cytometry : 1-3ug/million cells Direct ELISA : 0.1-0.5ug/ml
Limitations	This RNase L antibody is available for research use only.



Flow cytometry testing of mouse HEPA1-6 cells with RNase L antibody at 1ug/million cells (blocked with goat sera); Red=cells alone, Green=isotype control, Blue= RNase L antibody.



Flow cytometry testing of rat NRK cells with RNase L antibody at 1ug/million cells (blocked with goat sera); Red=cells alone, Green=isotype control, Blue= RNase L antibody.



Western blot testing of mouse 1) lung and 2) RAW264.7 cell lysate with RNase L antibody. Predicted molecular weight ~83 kDa.

Description

RNase L is an enzyme that in humans is encoded by the RNASEL gene. This gene encodes a component of the interferon-regulated 2-5A system that functions in the antiviral and antiproliferative roles of interferons. Mutations in this gene have been associated with predisposition to prostate cancer and this gene is a candidate for the hereditary prostate cancer 1 (HPC1) allele.

Application Notes

Optimal dilution of the RNase L antibody should be determined by the researcher.

Immunogen

Recombinant mouse protein (amino acids E24-S735) was used as the immunogen for the RNase L antibody.

Storage

After reconstitution, the RNase L antibody can be stored for up to one month at 4°C. For long-term, aliquot and store at -20°C. Avoid repeated freezing and thawing.