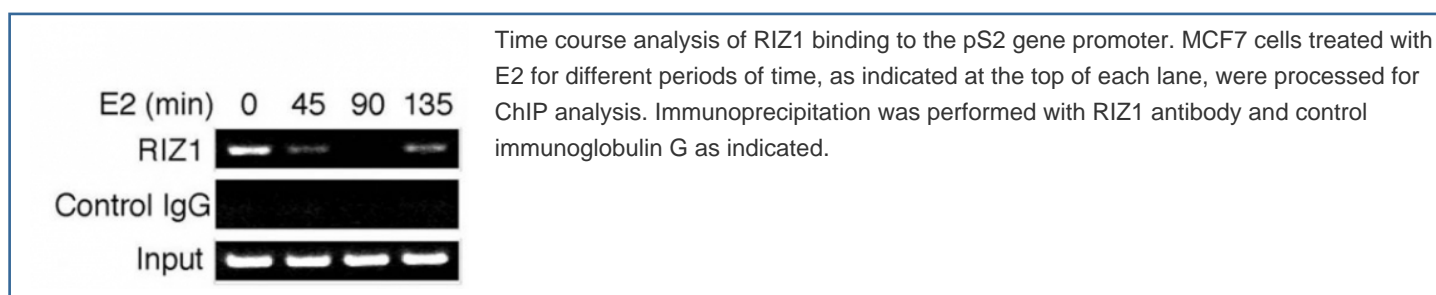
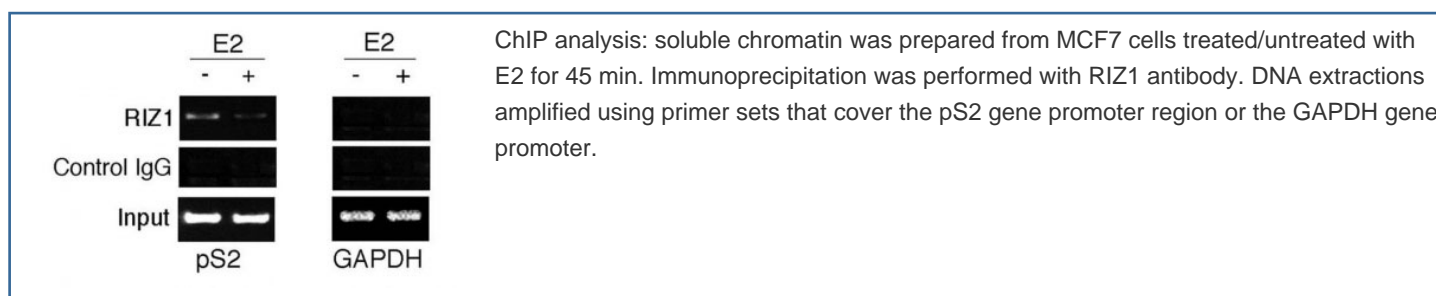


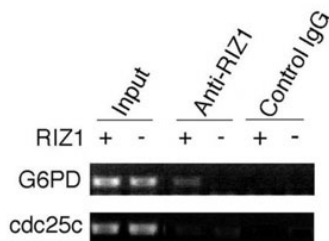
RIZ1 Antibody [clone 33AT1045] (F40202)

Catalog No.	Formulation	Size
F40202-0.4ML	In 1X PBS, pH 7.4, with 0.09% sodium azide	0.4 ml
F40202-0.08ML	In 1X PBS, pH 7.4, with 0.09% sodium azide	0.08 ml

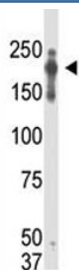
[Bulk quote request](#)

Availability	1-3 business days
Species Reactivity	Human, Mouse
Format	Purified
Clonality	Monoclonal (mouse origin)
Isotype	Mouse IgG1
Clone Name	33AT1045
Purity	Purified
UniProt	Q13029
Applications	Western Blot : 1:1000 ChIP : 1:100
Limitations	This RIZ1 antibody is available for research use only.





ChIP analysis was performed on RIZ1 knockout mouse embryonic fibroblasts with RIZ1 antibody. Immunoprecipitated chromatin DNA was analyzed by PCR with primers in the G6pd promoter region and in the Cdc25c promoter region.



Western blot analysis of PRDM2 / RIZ1 antibody and transfected cell lysate

Description

This tumor suppressor gene is a member of a nuclear histone/protein methyltransferase superfamily. It encodes a zinc finger protein that can bind to retinoblastoma protein, estrogen receptor, and the TPA-responsive element (MTE) of the heme-oxygenase-1 gene. Although the functions of this protein have not been fully characterized, it may (1) play a role in transcriptional regulation during neuronal differentiation and pathogenesis of retinoblastoma, (2) act as a transcriptional activator of the heme-oxygenase-1 gene, and (3) be a specific effector of estrogen action. Multiple transcript variants encoding different isoforms have been found for this gene.

Application Notes

Titration of the RIZ1 antibody may be required due to differences in protocols and secondary/substrate sensitivity.

Immunogen

Purified recombinant GST fusion protein encoding aa 1-347 of human RIZ1. This RIZ1 antibody is specific and does not recognize the beta isoform (RIZ2).

Storage

Aliquot the RIZ1 antibody and store frozen at -20oC or colder. Avoid repeated freeze-thaw cycles.