

RIPK2 Antibody (F50800)

| Catalog No. | Formulation | Size |
|---------------|--|---------|
| F50800-0.4ML | In 1X PBS, pH 7.4, with 0.09% sodium azide | 0.4 ml |
| F50800-0.08ML | In 1X PBS, pH 7.4, with 0.09% sodium azide | 0.08 ml |

[Bulk quote request](#)

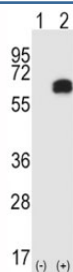
| | |
|---------------------------|---|
| Availability | 1-3 business days |
| Species Reactivity | Human, Mouse |
| Format | Purified |
| Clonality | Polyclonal (rabbit origin) |
| Isotype | Rabbit Ig |
| Purity | Purified |
| UniProt | O43353 |
| Applications | Western Blot : 1:1000 IHC (Paraffin) : 1:50-1:100 |
| Limitations | This RIPK2 antibody is available for research use only. |



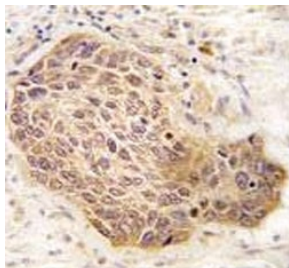
Western blot analysis of RIPK2 antibody and mouse cerebellum tissue lysate. Predicted molecular weight: 61/45 kDa (isoforms 1/2).



Western blot analysis of RIPK2 antibody in Ramos lysate



Western blot analysis of RIPK2 antibody and 293 cell lysate either nontransfected (Lane 1) or transiently transfected (2) with the RIPK2 gene.



IHC analysis of FFPE human lung carcinoma tissue stained with RIPK2 antibody

Description

RIPK2 is a member of the receptor-interacting protein (RIP) family of serine/threonine protein kinases. The encoded protein contains a C-terminal recruitment domain (CARD), and is a component of signaling complexes in both the innate and adaptive immune pathways. It is a potent activator of NF-kappaB and inducer of apoptosis in response to various stimuli.

Application Notes

Titration of the RIPK2 antibody may be required due to differences in protocols and secondary/substrate sensitivity.

Immunogen

A portion of amino acids 458-488 from the human protein was used as the immunogen for this RIPK2 antibody.

Storage

Aliquot the RIPK2 antibody and store frozen at -20°C or colder. Avoid repeated freeze-thaw cycles.