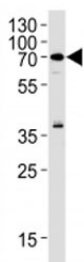


RIPK2 Antibody (F43229)

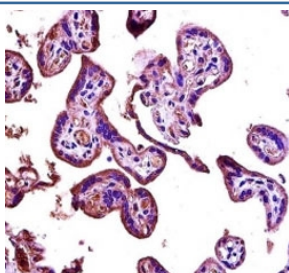
Catalog No.	Formulation	Size
F43229-0.4ML	In 1X PBS, pH 7.4, with 0.09% sodium azide	0.4 ml
F43229-0.08ML	In 1X PBS, pH 7.4, with 0.09% sodium azide	0.08 ml

[Bulk quote request](#)

Availability	1-3 business days
Species Reactivity	Human
Format	Antigen affinity purified
Host	Rabbit
Clonality	Polyclonal (rabbit origin)
Isotype	Rabbit Ig
Purity	Antigen affinity
UniProt	O43353
Applications	Western Blot : 1:1000 IHC (Paraffin) : 1:10-1:50
Limitations	This RIPK2 antibody is available for research use only.



RIPK2 antibody western blot analysis in Raji lysate



RIPK2 antibody immunohistochemistry analysis in formalin fixed and paraffin embedded human placenta tissue.

Description

This gene encodes a member of the receptor-interacting protein (RIP) family of serine/threonine protein kinases. The encoded protein contains a C-terminal caspase activation and recruitment domain (CARD), and is a component of signaling complexes in both the innate and adaptive immune pathways. It is a potent activator of NF-kappaB and inducer of apoptosis in response to various stimuli.

Application Notes

Titration of the RIPK2 antibody may be required due to differences in protocols and secondary/substrate sensitivity.

Immunogen

A portion of amino acids 39-68 from the human protein was used as the immunogen for this RIPK2 antibody.

Storage

Aliquot the RIPK2 antibody and store frozen at -20oC or colder. Avoid repeated freeze-thaw cycles.