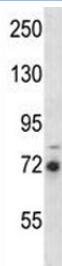


RIPK1 Antibody (F43338)

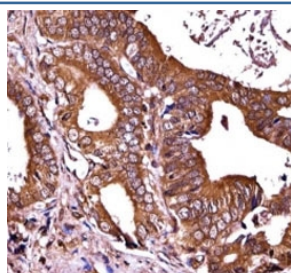
Catalog No.	Formulation	Size
F43338-0.4ML	In 1X PBS, pH 7.4, with 0.09% sodium azide	0.4 ml
F43338-0.08ML	In 1X PBS, pH 7.4, with 0.09% sodium azide	0.08 ml

[Bulk quote request](#)

Availability	1-3 business days
Species Reactivity	Human
Format	Antigen affinity purified
Host	Rabbit
Clonality	Polyclonal (rabbit origin)
Isotype	Rabbit Ig
Purity	Antigen affinity
UniProt	Q13546
Applications	Western Blot : 1:1000 IHC (Paraffin) : 1:10-1:50
Limitations	This RIPK1 antibody is available for research use only.



RIPK1 antibody western blot analysis in MDA-MB231 lysate.



RIPK1 antibody immunohistochemistry analysis in formalin fixed and paraffin embedded human prostate carcinoma.

Description

Essential adapter molecule for the activation of NF-kappa-B. Following different upstream signals (binding of inflammatory cytokines, stimulation of pathogen recognition receptors, or DNA damage), particular RIPK1-containing complexes are formed, initiating a limited number of cellular responses. Upon TNFA stimulation RIPK1 is recruited to a TRADD-TRAF complex initiated by TNFR1 trimerization. There, it is ubiquitinated via 'Lys-63'-link chains, inducing its association with the IKK complex, and its activation through NEMO binding of polyubiquitin chains.

Application Notes

Titration of the RIPK1 antibody may be required due to differences in protocols and secondary/substrate sensitivity.

Immunogen

A portion of amino acids 152-180 from the human protein was used as the immunogen for this RIPK1 antibody.

Storage

Aliquot the RIPK1 antibody and store frozen at -20oC or colder. Avoid repeated freeze-thaw cycles.