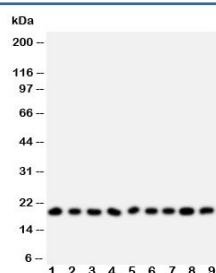


## Ribonuclease A Antibody (R30580)

Catalog No.	Formulation	Size
R30580	0.5mg/ml if reconstituted with 0.2ml sterile DI water	100 ug

**Bulk quote request**

<b>Availability</b>	1-3 business days
<b>Species Reactivity</b>	Human
<b>Format</b>	Antigen affinity purified
<b>Host</b>	Rabbit
<b>Clonality</b>	Polyclonal (rabbit origin)
<b>Isotype</b>	Rabbit IgG
<b>Purity</b>	Antigen affinity
<b>Buffer</b>	Lyophilized from 1X PBS with 2.5% BSA and 0.025% sodium azide/thimerosal
<b>UniProt</b>	P07998
<b>Applications</b>	Western Blot : 0.5-1ug/ml
<b>Limitations</b>	This Ribonuclease A antibody is available for research use only.



Western blot testing of Ribonuclease A antibody and Lane 1: MCF-7; 2: U87; 3: HeLa; 4: MM231; 5: Jurkat; 6: SMMC-7721; 7: COLO320; 8: SW620; 9: CEM; Predicted size: 18KD; Observed size: 18KD

## Description

Ribonuclease A is an enzyme that in humans is encoded by the RNASE1 gene. By genomic sequence analysis, the gene is mapped to chromosome 14q11.2, where it is linked to 7 other RNase superfamily genes. Monomeric human pancreatic RNase, devoid of any biological activity other than its RNA degrading ability, was engineered into a dimeric protein with a cytotoxic action on mouse and human tumor cells, but lacking any appreciable toxicity on mouse and human normal cells. This dimeric variant of human pancreas RNase selectively sensitizes to apoptotic death cells derived from a human thyroid tumor. Because of its selectivity for tumor cells, and because of its human origin, this protein represents a potentially very attractive, novel tool for anticancer therapy.

## Application Notes

The stated application concentrations are suggested starting amounts. Titration of the Ribonuclease A antibody may be required due to differences in protocols and secondary/substrate sensitivity.

## Immunogen

An amino acid sequence from the middle region of human Ribonuclease A (NTFVHEPLVDVQNVCFQEK) was used as the immunogen for this Ribonuclease A antibody.

## Storage

After reconstitution, the Ribonuclease A antibody can be stored for up to one month at 4°C. For long-term, aliquot and store at -20°C. Avoid repeated freezing and thawing.