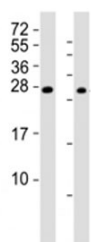


## RHOXF1 Antibody (F53254)

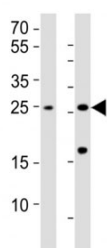
Catalog No.	Formulation	Size
F53254-0.4ML	In 1X PBS, pH 7.4, with 0.09% sodium azide	0.4 ml
F53254-0.08ML	In 1X PBS, pH 7.4, with 0.09% sodium azide	0.08 ml

[Bulk quote request](#)

<b>Availability</b>	1-3 business days
<b>Species Reactivity</b>	Human
<b>Format</b>	Antigen affinity purified
<b>Clonality</b>	Polyclonal (rabbit origin)
<b>Isotype</b>	Rabbit Ig
<b>Purity</b>	Antigen affinity
<b>UniProt</b>	Q8NHV9
<b>Applications</b>	Western Blot : 1:1000-2000
<b>Limitations</b>	This RHOXF1 antibody is available for research use only.



Western blot testing of RHOXF1 antibody at 1:2000; Lane 1: A2058 cell lysate, Lane 2: human ovary lysate. Predicted band size : 21 kDa



Western blot testing of RHOXF1 antibody at 1:1000; Lane 1: HL-60 whole lysate; Lane 2: human testis lysate. Predicted band size : 21 kDa

## Description

RHOXF1 may be a transcription factor involved in the reproductive processes.

## **Application Notes**

Titration of the RHOXF1 antibody may be required due to differences in protocols and secondary/substrate sensitivity.

## **Immunogen**

A portion of amino acids 85-120 of the human protein was used as immunogen for this RHOXF1 antibody.

## **Storage**

Aliquot the RHOXF1 antibody and store frozen at -20oC or colder. Avoid repeated freeze-thaw cycles.