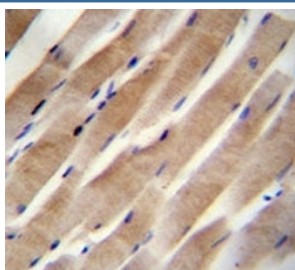


RHEB Antibody (F41677)

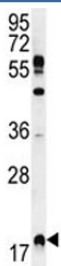
Catalog No.	Formulation	Size
F41677-0.4ML	In 1X PBS, pH 7.4, with 0.09% sodium azide	0.4 ml
F41677-0.08ML	In 1X PBS, pH 7.4, with 0.09% sodium azide	0.08 ml

Bulk quote request

Availability	1-3 business days
Species Reactivity	Human
Predicted Reactivity	Mouse, Rat, Bovine
Format	Purified
Clonality	Polyclonal (rabbit origin)
Isotype	Rabbit Ig
Purity	Purified
UniProt	Q15382
Applications	Western Blot : 1:1000 IHC (Paraffin) : 1:50-1:100
Limitations	This RHEB antibody is available for research use only.



RHEB antibody immunohistochemistry analysis in formalin fixed and paraffin embedded human skeletal muscle.



RHEB antibody western blot analysis in MDA-MB231 lysate.

Description

This gene is a member of the small GTPase superfamily and encodes a lipid-anchored, cell membrane protein with five repeats of the RAS-related GTP-binding region. This protein is vital in regulation of growth and cell cycle progression due to its role in the insulin/TOR/S6K signaling pathway. The protein has GTPase activity and shuttles between a GDP-bound form and a GTP-bound form, and farnesylation of the protein is required for this activity. Three pseudogenes have been mapped, two on chromosome 10 and one on chromosome 22.

Application Notes

Titration of the RHEB antibody may be required due to differences in protocols and secondary/substrate sensitivity.

Immunogen

A portion of amino acids 104-134 from the human protein was used as the immunogen for this RHEB antibody.

Storage

Aliquot the RHEB antibody and store frozen at -20oC or colder. Avoid repeated freeze-thaw cycles.