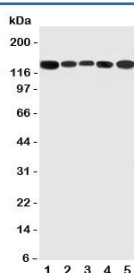


## RGS3 Antibody (R31161)

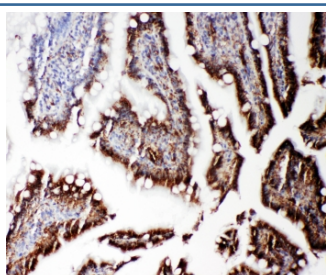
Catalog No.	Formulation	Size
R31161	0.5mg/ml if reconstituted with 0.2ml sterile DI water	100 ug

**Bulk quote request**

<b>Availability</b>	1-3 business days
<b>Species Reactivity</b>	Human, Mouse, Rat
<b>Format</b>	Antigen affinity purified
<b>Host</b>	Rabbit
<b>Clonality</b>	Polyclonal (rabbit origin)
<b>Isotype</b>	Rabbit IgG
<b>Purity</b>	Antigen affinity
<b>Buffer</b>	Lyophilized from 1X PBS with 2.5% BSA and 0.025% sodium azide/thimerosal
<b>UniProt</b>	Q9DC04
<b>Applications</b>	Western Blot : 0.5-1ug/ml IHC (FFPE) : 0.5-1ug/ml
<b>Limitations</b>	This RGS3 antibody is available for research use only.



Western blot testing of RGS3 antibody and Lane 1: rat testis; 2: (r) brain; 3: (r) spleen; 4: human HeLa; 5: (h) U87 cell lysate



IHC-P: RGS3 antibody testing of rat intestine tissue

## Description

Regulator of G Protein Signaling 3 is a protein that in humans is encoded by the RGS3 gene. Chatterjee et al.(1997) studied RGS3, the largest member of the RGS family then identified. Mouse PdZ-Rgs3 can mediate signaling from the ephrin-B cytoplasmic tail. By radiation hybrid mapping, Chatterjee et al.(1997) assigned the gene to chromosome 9q31-q33. Lu et al.(2001) showed that Sdf1, a chemokine with a G protein-coupled receptor, and Bdnf are chemoattractants for cerebellar granule cells, and that Sdf1 chemoattraction is selectively inhibited by soluble ephrin-B receptor. This inhibition could be blocked by a truncated PdZ-Rgs3 protein lacking the RGS domain.

## Application Notes

The stated application concentrations are suggested starting amounts. Titration of the RGS3 antibody may be required due to differences in protocols and secondary/substrate sensitivity.

## Immunogen

An amino acid sequence from the C-terminus of mouse Regulator of G Protein Signaling 3 (DSYTREHTKENLQSITR) was used as the immunogen for this RGS3 antibody (100% rat homology).

## Storage

After reconstitution, the RGS3 antibody can be stored for up to one month at 4oC. For long-term, aliquot and store at -20oC. Avoid repeated freezing and thawing.