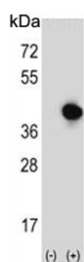


RFC5 Antibody (F54778)

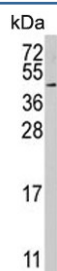
Catalog No.	Formulation	Size
F54778-0.4ML	In 1X PBS, pH 7.4, with 0.09% sodium azide	0.4 ml
F54778-0.08ML	In 1X PBS, pH 7.4, with 0.09% sodium azide	0.08 ml

[Bulk quote request](#)

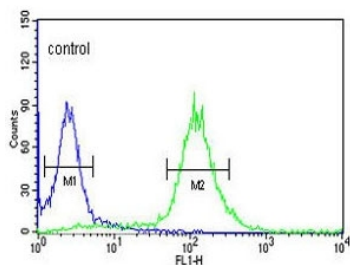
Availability	1-3 business days
Species Reactivity	Human
Format	Purified
Clonality	Polyclonal (rabbit origin)
Isotype	Rabbit Ig
Purity	Purified
UniProt	P40937
Applications	Flow Cytometry : 1:25 (1x10e6 cells) Western Blot : 1:500-1:2000
Limitations	This RFC5 antibody is available for research use only.



Western blot testing of 1) non-transfected and 2) transfected 293 cell lysate with RFC5 antibody.



Western blot testing of human HeLa cell lysate with RFC5 antibody. Predicted molecular weight ~38 kDa.



Flow cytometry testing of human HeLa cells with RFC5 antibody; Blue=isotype control, Green= RFC5 antibody.

Description

The elongation of primed DNA templates by DNA polymerase delta and DNA polymerase epsilon requires the accessory proteins proliferating cell nuclear antigen (PCNA) and replication factor C (RFC). RFC, also named activator 1, is a protein complex consisting of five distinct subunits of 140, 40, 38, 37, and 36 kD. RFC5 is the 36 kD subunit. This subunit can interact with the C-terminal region of PCNA. It forms a core complex with the 38 and 40 kDa subunits. The core complex possesses DNA-dependent ATPase activity, which was found to be stimulated by PCNA in an in vitro system.

Application Notes

The stated application concentrations are suggested starting points. Titration of the RFC5 antibody may be required due to differences in protocols and secondary/substrate sensitivity.

Immunogen

A portion of amino acids 170-200 from the human protein was used as the immunogen for the RFC5 antibody.

Storage

Aliquot the RFC5 antibody and store frozen at -20oC or colder. Avoid repeated freeze-thaw cycles.