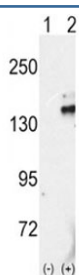


## RET Antibody (F50665)

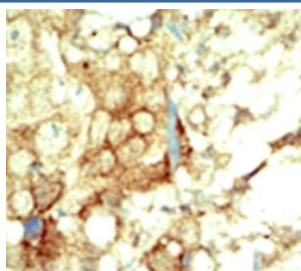
Catalog No.	Formulation	Size
F50665-0.4ML	In 1X PBS, pH 7.4, with 0.09% sodium azide	0.4 ml
F50665-0.08ML	In 1X PBS, pH 7.4, with 0.09% sodium azide	0.08 ml

**Bulk quote request**

<b>Availability</b>	1-3 business days
<b>Species Reactivity</b>	Human
<b>Format</b>	Purified
<b>Clonality</b>	Polyclonal (rabbit origin)
<b>Isotype</b>	Rabbit Ig
<b>Purity</b>	Purified
<b>UniProt</b>	P07949
<b>Applications</b>	Western Blot : 1:1000 IHC (Paraffin) : 1:50-1:100
<b>Limitations</b>	This RET antibody is available for research use only.



Western blot analysis of RET antibody and 293 cell lysate either nontransfected (Lane 1) or transiently transfected with the RET gene (2).



IHC analysis of FFPE human breast carcinoma tissue stained with the RET antibody

## Description

RET, a member of the cadherin superfamily, is one of the receptor tyrosine kinases, which are cell-surface molecules that transduce signals for cell growth and differentiation. This protein plays a crucial role in neural crest development, and the gene can undergo oncogenic activation in vivo and in vitro by cytogenetic rearrangement. Mutations are associated with the disorders multiple endocrine neoplasia, type IIA, multiple endocrine neoplasia, type IIB, Hirschsprung disease, and medullary thyroid carcinoma.

## Application Notes

Titration of the RET antibody may be required due to differences in protocols and secondary/substrate sensitivity.

## Immunogen

A portion of amino acids 1012-1042 from the human protein was used as the immunogen for this RET antibody.

## Storage

Aliquot the RET antibody and store frozen at -20°C or colder. Avoid repeated freeze-thaw cycles.