

Relaxin Antibody / RLN1 (R32980)

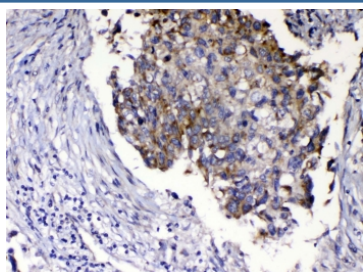
Catalog No.	Formulation	Size
R32980	0.5mg/ml if reconstituted with 0.2ml sterile DI water	100 ug

Bulk quote request

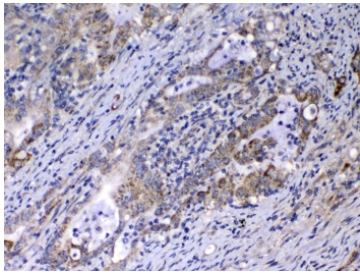
Availability	1-3 business days
Species Reactivity	Human, Rat
Format	Antigen affinity purified
Host	Rabbit
Clonality	Polyclonal (rabbit origin)
Isotype	Rabbit IgG
Purity	Antigen affinity
Buffer	Lyophilized from 1X PBS with 2.5% BSA, 0.025% sodium azide
UniProt	P04808
Localization	Secreted
Applications	Western Blot : 0.5-1ug/ml IHC (FFPE) : 1-2ug/ml
Limitations	This Relaxin antibody is available for research use only.



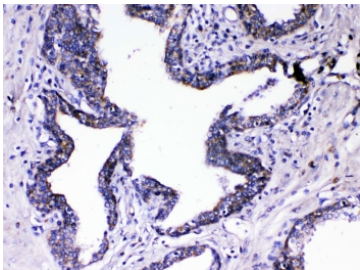
Western blot testing of rat PC-12 cell lysate with Relaxin antibody at 0.5ug/ml. Predicted molecular weight ~21 kDa.



IHC testing of FFPE human lung cancer tissue with Relaxin antibody at 1ug/ml. Required HIER: steam section in pH6 citrate buffer for 20 min and allow to cool prior to testing.



IHC testing of FFPE human colon cancer tissue with Relaxin antibody at 1ug/ml. Required HIER: steam section in pH6 citrate buffer for 20 min and allow to cool prior to testing.



IHC testing of FFPE human prostate cancer tissue with Relaxin antibody at 1ug/ml. Required HIER: steam section in pH6 citrate buffer for 20 min and allow to cool prior to testing.

Description

Relaxin 1 is a member of relaxin-like peptide family. Relaxin gene maps to human chromosome 19 near D19Mit23. Relaxin is a peptide hormone produced by the corpora lutea of ovaries during pregnancy in many mammalian species, including man. Relaxin widens the pubic bone and facilitates labor, it also softens the cervix (cervical ripening), and relaxes the uterine musculature. However, its significance may reach much further. Relaxin affects collagen metabolism, inhibiting collagen synthesis and enhancing its breakdown by increasing matrix metalloproteinases. It also enhances angiogenesis and is a potent renal vasodilator.

Application Notes

Optimal dilution of the Relaxin antibody should be determined by the researcher.

Immunogen

Amino acids VAAKWKDDVIKLCGRELVRAQIAICGMSTWS were used as the immunogen for the Relaxin antibody.

Storage

After reconstitution, the Relaxin antibody can be stored for up to one month at 4°C. For long-term, aliquot and store at -20°C. Avoid repeated freezing and thawing.