

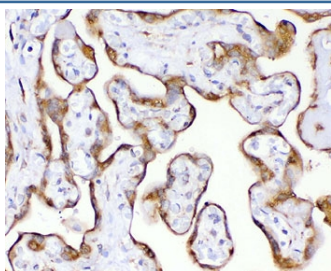
## Recombinant TIMP2 Antibody [clone MPIB2-1R] (V7444)

Catalog No.	Formulation	Size
V7444-100UG	0.2 mg/ml in 1X PBS with 0.1 mg/ml BSA (US sourced) and 0.05% sodium azide	100 ug
V7444-20UG	0.2 mg/ml in 1X PBS with 0.1 mg/ml BSA (US sourced) and 0.05% sodium azide	20 ug
V7444SAF-100UG	1 mg/ml in 1X PBS; BSA free, sodium azide free	100 ug
V7444IHC-7ML	Prediluted in 1X PBS with 0.1 mg/ml BSA (US sourced) and 0.05% sodium azide; *For IHC use only*	7 ml

Recombinant **RABBIT MONOCLONAL**

[Bulk quote request](#)

<b>Availability</b>	1-3 business days
<b>Species Reactivity</b>	Human
<b>Format</b>	Purified
<b>Clonality</b>	Recombinant Rabbit Monoclonal
<b>Isotype</b>	Rabbit IgG, kappa
<b>Clone Name</b>	MPIB2-1R
<b>Purity</b>	Protein A affinity chromatography
<b>UniProt</b>	P16035
<b>Localization</b>	Cytoplasmic, cell surface, secreted
<b>Applications</b>	Immunohistochemistry (FFPE) : 1-2ug/ml for 30 min at RT Prediluted IHC Only Format : incubate for 30 min at RT (1)
<b>Limitations</b>	This recombinant TIMP2 antibody is available for research use only.



IHC staining of FFPE human placenta with recombinant TIMP2 antibody (clone MPIB2-1R). Required HIER: requires boil tissue sections in pH 9 10mM Tris with 1mM EDTA for 10-20 min and allow to cool before testing.

## Description

TIMP2 is a member of the TIMP gene family. The proteins encoded by this gene family are natural inhibitors of the matrix metalloproteinases, a group of peptidases involved in degradation of the extracellular matrix. In addition to an inhibitory role against metalloproteinases, Metalloproteinase inhibitor 2 / TIMP2 has a unique role among TIMP family members in its ability to directly suppress the proliferation of endothelial cells. As a result, it may be critical to the maintenance of tissue homeostasis by suppressing the proliferation of quiescent tissues in response to angiogenic factors, and by inhibiting protease activity in tissues undergoing remodelling of the extracellular matrix. [RefSeq]

## Application Notes

Optimal dilution of the recombinant TIMP2 antibody should be determined by the researcher.

1. The prediluted format is supplied in a dropper bottle and is optimized for use in IHC. After epitope retrieval step (if required), drip mAb solution onto the tissue section and incubate at RT for 30 min.

## Immunogen

Amino acids 56-66 (DSGNDIYGNPI) from the human protein were used as the immunogen for this recombinant TIMP2 antibody.

## Storage

Store the recombinant TIMP2 antibody at 2-8oC (with azide) or aliquot and store at -20oC or colder (without azide).