

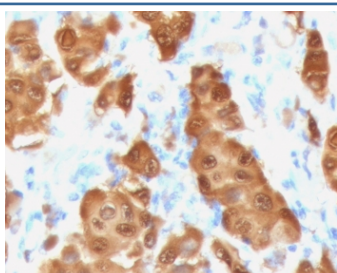
## Recombinant S100B Antibody / Rabbit Monoclonal [clone PS1B1-2R] (V3674)

Catalog No.	Formulation	Size
V3674-100UG	0.2 mg/ml in 1X PBS with 0.1 mg/ml BSA (US sourced) and 0.05% sodium azide	100 ug
V3674-20UG	0.2 mg/ml in 1X PBS with 0.1 mg/ml BSA (US sourced) and 0.05% sodium azide	20 ug
V3674SAF-100UG	1 mg/ml in 1X PBS; BSA free, sodium azide free	100 ug
V3674IHC-7ML	Prediluted in 1X PBS with 0.1 mg/ml BSA (US sourced) and 0.05% sodium azide; *For IHC use only*	7 ml

Recombinant **RABBIT MONOCLONAL**

[Bulk quote request](#)

Availability	1-3 business days
Species Reactivity	Human
Format	Purified
Clonality	Recombinant Rabbit Monoclonal
Isotype	Rabbit IgG, kappa
Clone Name	PS1B1-2R
Purity	Protein A affinity chromatography
UniProt	P04271
Localization	Cytoplasmic, nuclear
Applications	Immunohistochemistry (FFPE) : 1-2ug/ml for 30 min at RT Prediluted IHC Only Format : incubate for 30 min at RT (1)
Limitations	This recombinant S100B antibody is available for research use only.



IHC testing of FFPE human melanoma tissue with recombinant S100B antibody (clone PS1B1-2R). HIER: steam sections in pH 9 10mM Tris with 1mM EDTA for 10-20 min.

## Description

S100 proteins are localized in the cytoplasm and nucleus of a wide range of cells, and involved in the regulation of a number of cellular processes such as cell cycle progression and differentiation. S100B may function in neurite extension, proliferation of melanoma cells, stimulation of Ca<sup>2+</sup> fluxes, inhibition of PKC-mediated phosphorylation, astrogliosis and axonal proliferation, and inhibition of microtubule assembly. In the developing CNS it acts as a neurotrophic factor and neuronal survival protein. In the adult organism it is usually elevated due to nervous system damage, which makes it a potential clinical marker. [Wiki]

## Application Notes

The optimal dilution of the recombinant S100B antibody for each application should be determined by the researcher.

1. The prediluted format is supplied in a dropper bottle and is optimized for use in IHC. After epitope retrieval step (if required), drip mAb solution onto the tissue section and incubate at RT for 30 min.

## Immunogen

Full length human recombinant S100B protein was used as the immunogen for this recombinant S100B antibody.

## Storage

Store the recombinant S100B antibody at 2-8°C (with azide) or aliquot and store at -20°C or colder (without azide).