

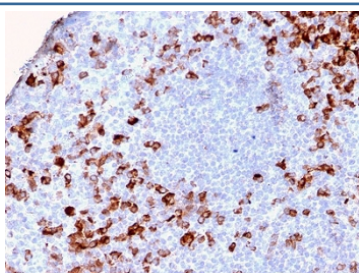
Recombinant Kappa Antibody [clone KLC2886R] (V7424)

Catalog No.	Formulation	Size
V7424-100UG	0.2 mg/ml in 1X PBS with 0.1 mg/ml BSA (US sourced) and 0.05% sodium azide	100 ug
V7424-20UG	0.2 mg/ml in 1X PBS with 0.1 mg/ml BSA (US sourced) and 0.05% sodium azide	20 ug
V7424SAF-100UG	1 mg/ml in 1X PBS; BSA free, sodium azide free	100 ug
V7424IHC-7ML	Prediluted in 1X PBS with 0.1 mg/ml BSA (US sourced) and 0.05% sodium azide; *For IHC use only*	7 ml

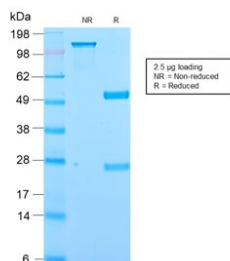
Recombinant **RABBIT MONOCLONAL**

[Bulk quote request](#)

Availability	1-3 business days
Species Reactivity	Human
Format	Purified
Clonality	Recombinant Rabbit Monoclonal
Isotype	Rabbit IgG, kappa
Clone Name	KLC2886R
Purity	Protein A affinity chromatography
UniProt	P01601, P01834
Localization	Cell Surface, cytoplasmic and secreted
Applications	Immunohistochemistry (FFPE) : 1-2ug/ml for 30 min at RT
Limitations	This recombinant Kappa antibody is available for research use only.



IHC testing of FFPE human tonsil tissue with recombinant Kappa antibody (clone KLC2886R). Required HIER: boil tissue sections in pH 9 10mM Tris with 1mM EDTA for 10-20 min followed by cooling at RT for 20 min.



SDS-PAGE analysis of purified, BSA-free recombinant Kappa antibody (clone KLC2886R) as confirmation of integrity and purity.

Description

This mAb is specific to kappa light chain of immunoglobulin and shows no cross-reaction with lambda light chain or any of the five heavy chains. In mammals, the two light chains in an antibody are always identical, with only one type of light chain, kappa or lambda. The ratio of Kappa to Lambda is 70:30. However, with the occurrence of multiple myeloma or other B-cell malignancies this ratio is disturbed. Antibody to the kappa light chain is reportedly useful in the identification of leukemias, plasmacytomas, and certain non-Hodgkin's lymphomas. Demonstration of clonality in lymphoid infiltrates indicates that the infiltrate is malignant.

Application Notes

The optimal dilution of the recombinant Kappa antibody for each application should be determined by the researcher.

1. The prediluted format is supplied in a dropper bottle and is optimized for use in IHC. After epitope retrieval step (if required), drip mAb solution onto the tissue section and incubate at RT for 30 min.

Immunogen

Recombinant human Ig kappa chain was used as the immunogen for this recombinant Kappa antibody.

Storage

Store the recombinant Kappa antibody at 2-8°C (with azide) or aliquot and store at -20°C or colder (without azide).