

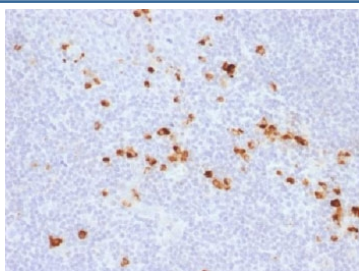
Recombinant IgG Antibody / Rabbit Monoclonal [clone IG507R] (V7251)

Catalog No.	Formulation	Size
V7251-100UG	0.2 mg/ml in 1X PBS with 0.1 mg/ml BSA (US sourced) and 0.05% sodium azide	100 ug
V7251-20UG	0.2 mg/ml in 1X PBS with 0.1 mg/ml BSA (US sourced) and 0.05% sodium azide	20 ug
V7251SAF-100UG	1 mg/ml in 1X PBS; BSA free, sodium azide free	100 ug
V7251IHC-7ML	Prediluted in 1X PBS with 0.1 mg/ml BSA (US sourced) and 0.05% sodium azide; *For IHC use only*	7 ml

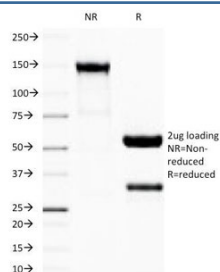
Recombinant **RABBIT MONOCLONAL**

[Bulk quote request](#)

Availability	1-3 business days
Species Reactivity	Human
Format	Purified
Host	Rabbit
Clonality	Recombinant Rabbit Monoclonal
Isotype	Rabbit IgG, kappa
Clone Name	IG507R
Purity	Protein A affinity chromatography
UniProt	P01857
Localization	Cytoplasm, Cell Surface and Secreted
Applications	Immunohistochemistry (FFPE) : 0.5-1ug/ml for 30 min at RT
Limitations	This recombinant IgG antibody is available for research use only.



IHC testing of FFPE human tonsil with recombinant IgG antibody (clone IG507R). HIER: steam sections in 10mM citrate buffer, pH 6.0, for 10-20 min.



SDS-PAGE Analysis of Purified, BSA-Free Recombinant IgG Antibody (clone IG507R). Confirmation of Integrity and Purity of the Antibody.

Description

Recognizes a protein of 75kDa, identified as gamma heavy chain of human immunoglobulins. It reacts with all subclasses of gamma chain of human immunoglobulins. It does not cross-react with alpha (IgA), mu (IgM), epsilon (IgE), or delta (IgD), heavy chains, T-cells, monocytes, granulocytes, or erythrocytes. This mAb is useful in the identification of leukemias, plasmacytomas, and certain non-Hodgkin's lymphomas. The most common feature of these malignancies is the restricted expression of a single heavy chain class. Demonstration of clonality in lymphoid infiltrates indicates that the infiltrate is clonal and therefore malignant.

Application Notes

The optimal dilution of the recombinant IgG antibody for each application should be determined by the researcher.

1. The prediluted format is supplied in a dropper bottle and is optimized for use in IHC. After epitope retrieval step (if required), drip mAb solution onto the tissue section and incubate at RT for 30 min.

Immunogen

Human Ig Gamma Chain was used as the immunogen for this recombinant IgG antibody.

Storage

Store the recombinant IgG antibody at 2-8oC (with azide) or aliquot and store at -20oC or colder (without azide).