

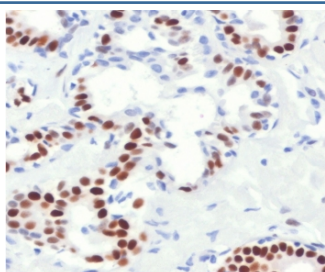
Recombinant Estrogen Receptor alpha Antibody [clone NR3Ga-4R] (V3687)

Catalog No.	Formulation	Size
V3687-100UG	0.2 mg/ml in 1X PBS with 0.1 mg/ml BSA (US sourced) and 0.05% sodium azide	100 ug
V3687-20UG	0.2 mg/ml in 1X PBS with 0.1 mg/ml BSA (US sourced) and 0.05% sodium azide	20 ug
V3687SAF-100UG	1 mg/ml in 1X PBS; BSA free, sodium azide free	100 ug
V3687IHC-7ML	Prediluted in 1X PBS with 0.1 mg/ml BSA (US sourced) and 0.05% sodium azide; *For IHC use only*	7 ml

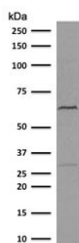
Recombinant **RABBIT MONOCLONAL**

[Bulk quote request](#)

Availability	1-3 business days
Species Reactivity	Human
Format	Purified
Host	Rabbit
Clonality	Recombinant Rabbit Monoclonal
Isotype	Rabbit IgG, kappa
Clone Name	NR3Ga-4R
Purity	Protein A affinity chromatography
UniProt	P03372
Localization	Nuclear
Applications	Western Blot : 1-2ug/ml Immunohistochemistry (FFPE) : 1-2ug/ml for 30 min at RT Prediluted IHC Only Format : incubate for 30 min at RT (1)
Limitations	This recombinant Estrogen Receptor alpha antibody is available for research use only.



IHC staining of FFPE human breast cancer with Estrogen Receptor alpha antibody (clone NR3Ga-4R). Required HIER: boil tissue sections in pH 9 10mM Tris with 1mM EDTA for 10-20 min followed by cooling at RT for 20 min.



Western blot testing of human MCF7 cell lysate with recombinant Estrogen Receptor antibody (clone NR3Ga-4R). Predicted molecular weight ~67 kDa.

Description

Estrogen receptor (ER) is an important regulator of growth and differentiation in the mammary gland. ER presence in breast tumors indicates an increased likelihood of response to anti-estrogen therapy.

Application Notes

The stated application concentrations are suggested starting points. Titration of the recombinant Estrogen Receptor alpha antibody may be required due to differences in protocols and secondary/substrate sensitivity.

1. The prediluted format is supplied in a dropper bottle and is optimized for use in IHC. After epitope retrieval step (if required), drip mAb solution onto the tissue section and incubate at RT for 30 min.

Immunogen

Human Estrogen Receptor alpha protein was used as the immunogen for this recombinant Estrogen Receptor alpha antibody.

Storage

Store the recombinant Estrogen Receptor alpha antibody at 2-8°C (with azide) or aliquot and store at -20°C or colder (without azide).