

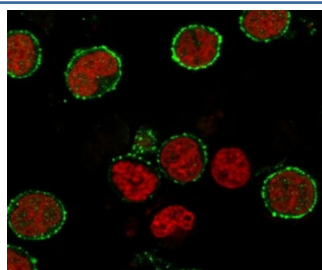
Recombinant CD6 Antibody [clone CDLA6-2R] (V7372)

Catalog No.	Formulation	Size
V7372-100UG	0.2 mg/ml in 1X PBS with 0.1 mg/ml BSA (US sourced) and 0.05% sodium azide	100 ug
V7372-20UG	0.2 mg/ml in 1X PBS with 0.1 mg/ml BSA (US sourced) and 0.05% sodium azide	20 ug
V7372SAF-100UG	1 mg/ml in 1X PBS; BSA free, sodium azide free	100 ug
V7372IHC-7ML	Prediluted in 1X PBS with 0.1 mg/ml BSA (US sourced) and 0.05% sodium azide; *For IHC use only*	7 ml

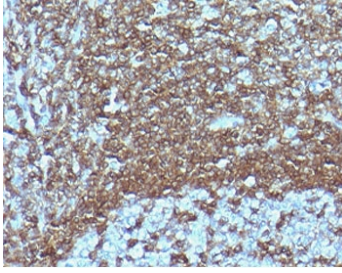
Recombinant **RABBIT MONOCLONAL**

[Bulk quote request](#)

Availability	1-3 business days
Species Reactivity	Human
Format	Purified
Host	Rabbit
Clonality	Recombinant Rabbit Monoclonal
Isotype	Rabbit IgG, kappa
Clone Name	CDLA6-2R
Purity	Protein A affinity chromatography
UniProt	P30203
Localization	Cell surface and Cytoplasmic
Applications	Immunofluorescence : 1-2ug/ml Immunohistochemistry (FFPE) : 1-2ug/ml for 30 min at RT Prediluted IHC Only Format : incubate for 30 min at RT (1)
Limitations	This recombinant CD6 antibody is available for research use only.



Immunofluorescent staining of human MOLT4 cells with CD6 antibody (clone CDLA6-2R, green) and Reddot nuclear stain (red).



IHC staining of FFPE human tonsil tissue with recombinant CD6 antibody (clone CDLA6-2R). HIER: boil tissue sections in pH6, 10mM citrate buffer, for 10-20 min followed by cooling at RT for 20 min.

Description

This gene encodes a protein found on the outer membrane of T-lymphocytes as well as some other immune cells. CD6 contains three scavenger receptor cysteine-rich (SRCR) domains and a binding site for an activated leukocyte cell adhesion molecule. It is important for continuation of T cell activation. This gene may be associated with susceptibility to multiple sclerosis. Multiple transcript variants encoding different isoforms have been found for this gene. [RefSeq]

Application Notes

The optimal dilution of the recombinant CD6 antibody for each application should be determined by the researcher.

1. The prediluted format is supplied in a dropper bottle and is optimized for use in IHC. After epitope retrieval step (if required), drip mAb solution onto the tissue section and incubate at RT for 30 min.

Immunogen

Full length recombinant human protein was used as the immunogen for this recombinant CD6 antibody.

Storage

Store the recombinant CD6 antibody at 2-8oC (with azide) or aliquot and store at -20oC or colder (without azide).