

## RBPMs2 Antibody (F41928)

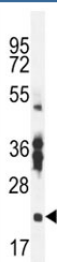
Catalog No.	Formulation	Size
F41928-0.4ML	In 1X PBS, pH 7.4, with 0.09% sodium azide	0.4 ml
F41928-0.08ML	In 1X PBS, pH 7.4, with 0.09% sodium azide	0.08 ml

[Bulk quote request](#)

<b>Availability</b>	1-3 business days
<b>Species Reactivity</b>	Mouse
<b>Predicted Reactivity</b>	Chicken, Xenopus
<b>Format</b>	Antigen affinity purified
<b>Clonality</b>	Polyclonal (rabbit origin)
<b>Isotype</b>	Rabbit Ig
<b>Purity</b>	Antigen affinity
<b>UniProt</b>	Q6ZRY4
<b>Applications</b>	Western Blot : 1:1000 IHC (Paraffin) : 1:10-1:50
<b>Limitations</b>	This RBPMs2 antibody is available for research use only.



RBPMs2 antibody immunohistochemistry analysis in formalin fixed and paraffin embedded human uterus tissue.



RBPMs2 antibody western blot analysis in mouse stomach tissue lysate.

## Description

BPMS2 contains one RRM (RNA recognition motif) domain. The exact function of BPMS2 remains unknown.

## Application Notes

Titration of the BPMS2 antibody may be required due to differences in protocols and secondary/substrate sensitivity.

## Immunogen

A portion of amino acids 113-141 from the human protein was used as the immunogen for this BPMS2 antibody.

## Storage

Aliquot the BPMS2 antibody and store frozen at -20oC or colder. Avoid repeated freeze-thaw cycles.