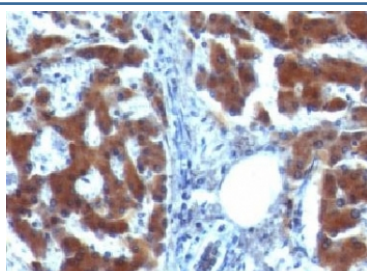


## RBP Antibody [clone RLBD1] (V7143)

| Catalog No.    | Formulation   | Size   |
|----------------|---|--------|
| V7143-100UG    | 0.2 mg/ml in 1X PBS with 0.1 mg/ml BSA (US sourced) and 0.05% sodium azide                      | 100 ug |
| V7143-20UG     | 0.2 mg/ml in 1X PBS with 0.1 mg/ml BSA (US sourced) and 0.05% sodium azide                      | 20 ug  |
| V7143SAF-100UG | 1 mg/ml in 1X PBS; BSA free, sodium azide free  | 100 ug |
| V7143IHC-7ML   | Prediluted in 1X PBS with 0.1 mg/ml BSA (US sourced) and 0.05% sodium azide; *For IHC use only* | 7 ml   |

[Bulk quote request](#)

|                           |   |
|---------------------------|---|
| <b>Availability</b>       | 1-3 business days   |
| <b>Species Reactivity</b> | Human   |
| <b>Format</b>             | Purified  |
| <b>Host</b>               | Mouse   |
| <b>Clonality</b>          | Monoclonal (mouse origin)   |
| <b>Isotype</b>            | Mouse IgG1, kappa   |
| <b>Clone Name</b>         | RLBD1   |
| <b>Purity</b>             | Protein G affinity chromatography   |
| <b>UniProt</b>            | P09455  |
| <b>Localization</b>       | Cytoplasmic   |
| <b>Applications</b>       | Immunohistochemistry (FFPE) : 1-2ug/ml for 30 min at RT<br>Prediluted IHC Only Format : incubate for 30 min at RT (1) |
| <b>Limitations</b>        | This RBP antibody is available for research use only.   |



IHC testing of FFPE human hepatocellular carcinoma with RBP (clone RLBD1). Staining of formalin-fixed tissues requires boiling tissue sections in pH 9 10mM Tris with 1mM EDTA for 10-20 min followed by cooling at RT for 20 min.

## Description

Recognizes a protein of 21kDa-25kDa, identified as retinol binding protein-1 (RBP1). This protein belongs to the lipocalin family and is the specific carrier for retinol (vitamin A alcohol) in the blood. It delivers retinol from the liver stores to the peripheral tissues. In plasma, the RBP-retinol complex interacts with transthyretin, which prevents its loss by filtration through the kidney glomeruli. A deficiency of vitamin A blocks secretion of the binding protein post-transnationally and results in defective delivery and supply to the epidermal cells.

## Application Notes

Optimal dilution of the RBP antibody should be determined by the researcher.

1. The prediluted format is supplied in a dropper bottle and is optimized for use in IHC. After epitope retrieval step (if required), drip mAb solution onto the tissue section and incubate at RT for 30 min.

## Immunogen

Recombinant human Retinol binding protein-1 was used as the immunogen for the RBP antibody.

## Storage

Store the RBP antibody at 2-8oC (with azide) or aliquot and store at -20oC or colder (without azide).