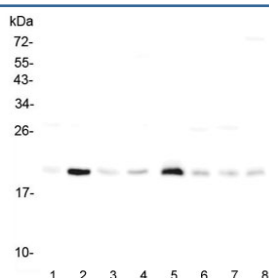


## RAP1A Antibody / KREV1 (R32160)

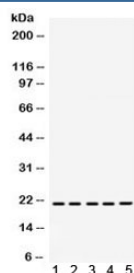
| Catalog No. | Formulation   | Size   |
|-------------|---|--------|
| R32160      | 0.5mg/ml if reconstituted with 0.2ml sterile DI water | 100 ug |

**Bulk quote request**

|                           |   |
|---------------------------|---|
| <b>Availability</b>       | 1-3 business days   |
| <b>Species Reactivity</b> | Human, Mouse, Rat   |
| <b>Format</b>             | Antigen affinity purified                                     |
| <b>Host</b>               | Rabbit  |
| <b>Clonality</b>          | Polyclonal (rabbit origin)                                    |
| <b>Isotype</b>            | Rabbit IgG  |
| <b>Purity</b>             | Antigen affinity  |
| <b>Buffer</b>             | Lyophilized from 1X PBS with 2.5% BSA and 0.025% sodium azide |
| <b>UniProt</b>            | P62834  |
| <b>Applications</b>       | Western Blot : 0.1-0.5ug/ml                                   |
| <b>Limitations</b>        | This RAP1A antibody is available for research use only.       |



Western blot testing of rat 1) heart, 2) lung, 3) stomach, 4) kidney and mouse 5) heart, 6) lung, 7) stomach and 8) kidney lysate with RAP1A antibody. Expected molecular weight ~21 kDa.



Western blot testing of 1) rat brain, 2) rat liver, 3) rat kidney, 4) human MCF7 and 5) human SW620 lysate with RAP1A antibody. Expected molecular weight ~21 kDa.

## Description

Ras-related protein Rap-1A is a protein that in humans is encoded by the RAP1A gene. This gene encodes a member of the Ras family of small GTPases. The encoded protein undergoes a change in conformational state and activity, depending on whether it is bound to GTP or GDP. And it is activated by several types of guanine nucleotide exchange factors (GEFs), and inactivated by two groups of GTPase-activating proteins (GAPs). The activation status of the encoded protein is therefore affected by the balance of intracellular levels of GEFs and GAPs. Additionally, the encoded protein regulates signaling pathways that affect cell proliferation and adhesion, and may play a role in tumor malignancy. Pseudogenes of this gene have been defined on chromosomes 14 and 17. Alternative splicing results in multiple transcript variants.

## Application Notes

Optimal dilution of the RAP1A antibody should be determined by the researcher.

## Immunogen

Amino acids EIFYDLVRQINRKTPVEKKKPKKKSC of human Ras-related protein Rap-1A were used as the immunogen for the RAP1A antibody.

## Storage

After reconstitution, the RAP1A antibody can be stored for up to one month at 4°C. For long-term, aliquot and store at -20°C. Avoid repeated freezing and thawing.