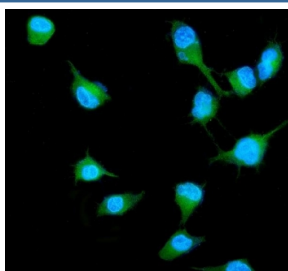


RALB Antibody (R31944)

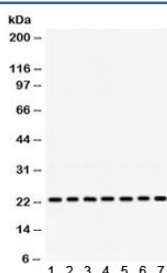
Catalog No.	Formulation	Size
R31944	0.5mg/ml if reconstituted with 0.2ml sterile DI water	100 ug

[Bulk quote request](#)

Availability	1-3 business days
Species Reactivity	Human, Mouse, Rat
Format	Antigen affinity purified
Clonality	Polyclonal (rabbit origin)
Isotype	Rabbit IgG
Purity	Antigen affinity
Buffer	Lyophilized from 1X PBS with 2.5% BSA and 0.025% sodium azide
UniProt	P11234
Applications	Western Blot : 0.1-0.5ug/ml Immunofluorescence : 2-4ug/ml Flow Cytometry : 1-3ug/million cells
Limitations	This RALB antibody is available for research use only.



Immunofluorescent staining of FFPE human A549 cells with RALB antibody (green) and DAPI nuclear stain (blue). HIER: steam section in pH6 citrate buffer for 20 min.



Western blot testing of 1) rat brain, 2) rat thymus, 3) rat lung, 4) mouse spleen, 5) mouse liver, 6) human HeLa, 7) human 22RV1 lysate with RALB antibody. Expected molecular weight ~23 kDa.

