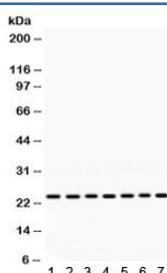


## RALA Antibody / Ras-related protein Ral-A (R31943)

Catalog No.	Formulation	Size
R31943	0.5mg/ml if reconstituted with 0.2ml sterile DI water	100 ug

**Bulk quote request**

<b>Availability</b>	1-3 business days
<b>Species Reactivity</b>	Human, Mouse, Rat
<b>Format</b>	Antigen affinity purified
<b>Host</b>	Rabbit
<b>Clonality</b>	Polyclonal (rabbit origin)
<b>Isotype</b>	Rabbit IgG
<b>Purity</b>	Antigen affinity
<b>Buffer</b>	Lyophilized from 1X PBS with 2.5% BSA and 0.025% sodium azide
<b>UniProt</b>	P11233
<b>Applications</b>	Western Blot : 0.1-0.5ug/ml
<b>Limitations</b>	This RALA antibody is available for research use only.



Western blot testing of rat 1) brain, 2) thymus, 3) testis, 4) mouse thymus, 5) mouse liver, 6) human HeLa and 7) human MCF7 lysate with RALA antibody.  
Expected/observed molecular weight ~24 kDa.

## Description

Ras-related protein Ral-A (RalA) is a protein that in humans is encoded by the RALA gene on chromosome 7. This protein is one of two isoforms of the Ral protein, the other being RalB, and part of the Ras GTPase family. As a Ras GTPase, RalA functions as a molecular switch that becomes active when bound to GTP and inactive when bound to GDP. It can be activated by RalGEFs and, in turn, activate effectors in signal transduction pathways leading to biological outcomes. Additionally, Ral proteins have been associated with the progression of several cancers, including bladder cancer and prostate cancer. While the above functions appear to be shared between the two Ral isoforms, their differential subcellular localizations result in their differing involvement in certain biological processes. In particular, RalA

is more involved in anchorage-independent cell growth, vesicle trafficking, and cytoskeletal organization. Moreover, RalA specifically interacts with Exo84 and Sec5 to regulate transport of membrane proteins in polarized epithelial cells and GLUT4 to the plasma membrane, as well as mitochondrial fission for cell division.

## Application Notes

Optimal dilution of the RALA antibody should be determined by the researcher.

## Immunogen

Amino acids DKVFFDLMREIRARKMEDSKEKNGKKKRKSLAKRIRERC of human RALA were used as the immunogen for the RALA antibody.

## Storage

After reconstitution, the RALA antibody can be stored for up to one month at 4°C. For long-term, aliquot and store at -20°C. Avoid repeated freezing and thawing.