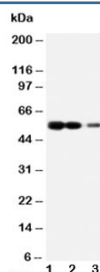


## RAGE Antibody (R30250)

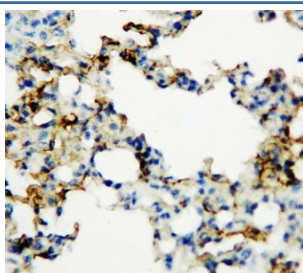
| Catalog No. | Formulation   | Size   |
|-------------|---|--------|
| R30250      | 0.5mg/ml if reconstituted with 0.2ml sterile DI water | 100 ug |

**Bulk quote request**

|                           |   |
|---------------------------|---|
| <b>Availability</b>       | 1-3 business days   |
| <b>Species Reactivity</b> | Human, Mouse, Rat   |
| <b>Format</b>             | Antigen affinity purified   |
| <b>Host</b>               | Rabbit  |
| <b>Clonality</b>          | Polyclonal (rabbit origin)  |
| <b>Isotype</b>            | Rabbit IgG  |
| <b>Purity</b>             | Antigen affinity  |
| <b>Buffer</b>             | Lyophilized from 1X PBS with 2.5% BSA and 0.025% sodium azide/thimerosal          |
| <b>UniProt</b>            | Q15109  |
| <b>Applications</b>       | Western Blot : 0.5-1ug/ml<br>IHC (FFPE) : 0.5-1ug/ml<br>IHC (Frozen) : 0.5-1ug/ml |
| <b>Limitations</b>        | This RAGE antibody is available for research use only.                            |



Western blot testing of RAGE antibody and Lane 1: recombinant human protein 10ng; 2: 5ng; 3: 2.5ng



IHC-P: RAGE antibody testing of rat lung tissue

## Description

The receptor for advanced glycation end products (RAGE) is a multi-ligand member of the immunoglobulin superfamily of cell surface molecules. It interacts with distinct molecules implicated in homeostasis, development and inflammation, and certain diseases such as diabetes and Alzheimers disease. RAGE is also a central cell surface receptor for amphotericin and EN-RAGE. RAGE is associated with sustained NF-kappaB activation in the diabetic microenvironment and has a central role in sensory neuronal dysfunction. Moreover, RAGE propagates cellular dysfunction in several inflammatory disorders and diabetes, and it also functions as an endothelial adhesion receptor promoting leukocyte recruitment.

## Application Notes

The stated application concentrations are suggested starting amounts. Titration of the RAGE antibody may be required due to differences in protocols and secondary/substrate sensitivity.

## Immunogen

An amino acid sequence from the middle region of human RAGE (KEQTRRHPETGLFTLQSEL) was used as the immunogen for this RAGE antibody.

## Storage

After reconstitution, the RAGE antibody can be stored for up to one month at 4°C. For long-term, aliquot and store at -20°C. Avoid repeated freezing and thawing.