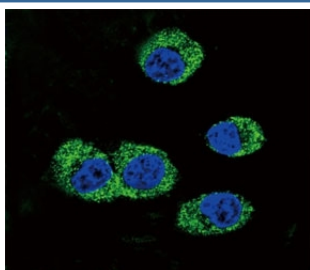


RAGE Antibody (F49953)

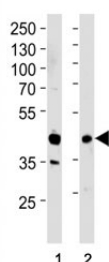
Catalog No.	Formulation	Size
F49953-0.4ML	In 1X PBS, pH 7.4, with 0.09% sodium azide	0.4 ml
F49953-0.08ML	In 1X PBS, pH 7.4, with 0.09% sodium azide	0.08 ml

[Bulk quote request](#)

Availability	1-3 business days
Species Reactivity	Human
Format	Antigen affinity purified
Host	Rabbit
Clonality	Polyclonal (rabbit origin)
Isotype	Rabbit Ig
Purity	Antigen affinity
UniProt	Q9UQ07
Applications	Western Blot : 1:1000 Immunofluorescence : 1:10-1:50
Limitations	This RAGE antibody is available for research use only.



Confocal immunofluorescent analysis of RAGE antibody with MDA-MB231 cells followed by Alexa Fluor 488-conjugated goat anti-rabbit IgG (green). DAPI was used as a nuclear counterstain (blue).



Western blot analysis of lysate from (1) HepG2 cell line and (2) human lung tissue lysate using RAGE antibody at 1:1000. Predicted molecular weight: 45-55kDa depending on glycosylation level.

Description

RAGE is able to phosphorylate several exogenous substrates and to undergo autophosphorylation.

Application Notes

Titration of the RAGE antibody may be required due to differences in protocols and secondary/substrate sensitivity.

Immunogen

A portion of amino acids 206-234 from the human protein was used as the immunogen for this RAGE antibody.

Storage

Aliquot the RAGE antibody and store frozen at -20oC or colder. Avoid repeated freeze-thaw cycles.