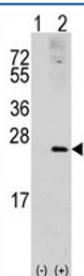


RAC1 Antibody (F50528)

Catalog No.	Formulation	Size
F50528-0.4ML	In 1X PBS, pH 7.4, with 0.09% sodium azide	0.4 ml
F50528-0.08ML	In 1X PBS, pH 7.4, with 0.09% sodium azide	0.08 ml

[Bulk quote request](#)

Availability	1-3 business days
Species Reactivity	Human
Predicted Reactivity	Bovine, Chicken, Drosophila, Mouse, Pig, Primate, Rat
Format	Antigen affinity purified
Clonality	Polyclonal (rabbit origin)
Isotype	Rabbit Ig
Purity	Antigen affinity
UniProt	P63000
Applications	Western Blot : 1:1000
Limitations	This RAC1 antibody is available for research use only.



Western blot analysis of RAC1 antibody and 293 cell lysate (2 ug/lane) either nontransfected (Lane 1) or transiently transfected with the RAC1 gene (2).

Description

RAC1 is a GTPase belonging to the RAS superfamily of small GTP-binding proteins. It is a pleiotropic regulator of many cellular processes, including the cell cycle, cell-cell adhesion, motility (through the actin network), and of epithelial differentiation (proposed to be necessary for maintaining epidermal stem cells).

Application Notes

Titration of the RAC1 antibody may be required due to differences in protocols and secondary/substrate sensitivity.

Immunogen

A portion of amino acids 49-78 from the human protein was used as the immunogen for this RAC1 antibody.

Storage

Aliquot the RAC1 antibody and store frozen at -20oC or colder. Avoid repeated freeze-thaw cycles.