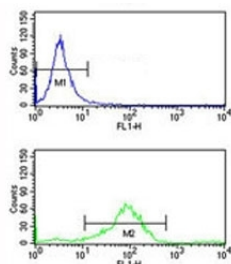


RAB7 Antibody (F51272)

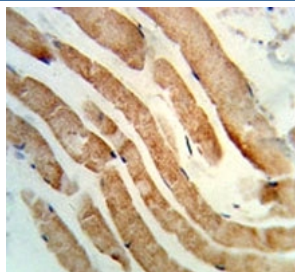
Catalog No.	Formulation	Size
F51272-0.4ML	In 1X PBS, pH 7.4, with 0.09% sodium azide	0.4 ml
F51272-0.08ML	In 1X PBS, pH 7.4, with 0.09% sodium azide	0.08 ml

[Bulk quote request](#)

Availability	1-3 business days
Species Reactivity	Human
Predicted Reactivity	Mouse
Format	Antigen affinity purified
Host	Rabbit
Clonality	Polyclonal (rabbit origin)
Isotype	Rabbit Ig
Purity	Antigen affinity
UniProt	P51149
Localization	Cytoplasmic
Applications	Western Blot : 1:1000 IHC (Paraffin) : 1:50-1:100 Flow Cytometry : 1:10-1:50
Limitations	This RAB7 antibody is available for research use only.



RAB7 antibody flow cytometry analysis of K562 cells (bottom histogram) compared to a negative control (top histogram). FITC-conjugated goat-anti-rabbit secondary Ab was used for the analysis.



IHC analysis of FFPE human skeletal muscle stained with RAB7 antibody



Western blot analysis of RAB7 antibody and K562 lysate. Expected molecular weight ~23 kDa.

Description

RAB family members are small, RAS-related GTP-binding proteins that are important regulators of vesicular transport. Each RAB protein targets multiple proteins that act in exocytic / endocytic pathways. RAB7 is a RAB family member that regulates vesicle traffic in the late endosomes and also from late endosomes to lysosomes. This protein is also involved in the cellular vacuolation of the VacA cytotoxin of *Helicobacter pylori*.

Application Notes

Titration of the RAB7 antibody may be required due to differences in protocols and secondary/substrate sensitivity.

Immunogen

A portion of amino acids 176-204 from human RAB7A was used as the immunogen for this RAB7 antibody.

Storage

Aliquot the RAB7 antibody and store frozen at -20°C or colder. Avoid repeated freeze-thaw cycles.