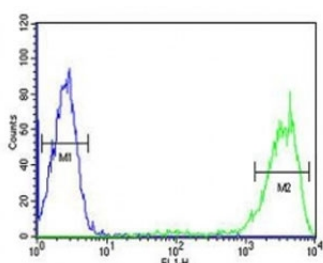


## Rab5 Antibody (F49994)

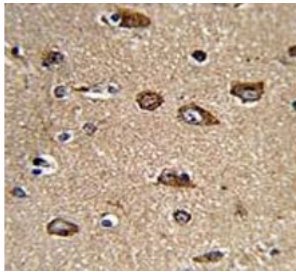
Catalog No.	Formulation	Size
F49994-0.4ML	In 1X PBS, pH 7.4, with 0.09% sodium azide	0.4 ml
F49994-0.08ML	In 1X PBS, pH 7.4, with 0.09% sodium azide	0.08 ml

[Bulk quote request](#)

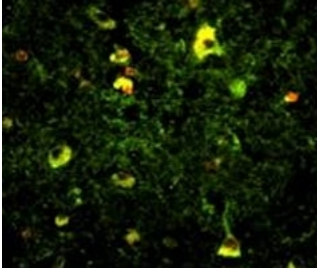
<b>Availability</b>	1-3 business days
<b>Species Reactivity</b>	Human
<b>Format</b>	Antigen affinity purified
<b>Clonality</b>	Polyclonal (rabbit origin)
<b>Isotype</b>	Rabbit Ig
<b>Purity</b>	Antigen affinity
<b>UniProt</b>	P20339
<b>Localization</b>	Cytoplasmic
<b>Applications</b>	Western Blot : 1:1000 IHC (Paraffin) : 1:50-1:100 Immunofluorescence : 1:10-1:50 Flow Cytometry : 1:10-1:50
<b>Limitations</b>	This Rab5 antibody is available for research use only.



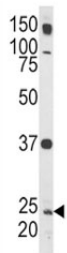
Rab5 antibody flow cytometric analysis of HL-60 cells (right histogram) compared to a negative control (left histogram). FITC-conjugated goat-anti-rabbit secondary Ab was used for the analysis.



IHC analysis of FFPE human brain tissue with Rab5 antibody



Immunofluorescence analysis of Rab5 antibody with paraffin-embedded human brain tissue. Primary antibody was followed by FITC-conjugated goat anti-rabbit IgG. FITC emits green fluorescence. Red counterstaining is PI.



Western blot analysis of Rab5 antibody and HL-60 lysate.

## Description

Rab5 is required for the fusion of plasma membranes and early endosomes.

## Application Notes

Titration of the Rab5 antibody may be required due to differences in protocols and secondary/substrate sensitivity.

## Immunogen

A portion of amino acids 182-211 from human Rab5a was used as the immunogen for this Rab5 antibody.

## Storage

Aliquot the Rab5 antibody and store frozen at -20°C or colder. Avoid repeated freeze-thaw cycles.