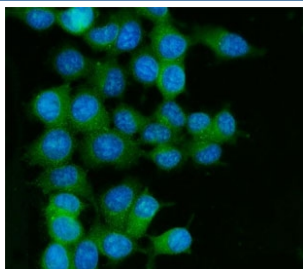


RAB13 Antibody (R32126)

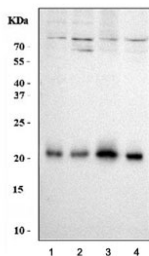
Catalog No.	Formulation	Size
R32126	0.5mg/ml if reconstituted with 0.2ml sterile DI water	100 ug

Bulk quote request

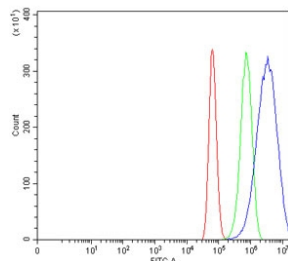
Availability	1-3 business days
Species Reactivity	Human
Format	Antigen affinity purified
Host	Rabbit
Clonality	Polyclonal (rabbit origin)
Isotype	Rabbit IgG
Purity	Antigen affinity
Buffer	Lyophilized from 1X PBS with 2% Trehalose and 0.025% sodium azide
UniProt	P51153
Localization	Cytoplasmic, membrane
Applications	Western Blot : 0.5-1ug/ml Immunofluorescence (FFPE) : 5ug/ml Flow Cytometry : 1-3ug/million cells
Limitations	This RAB13 antibody is available for research use only.



Immunofluorescent staining of FFPE human MCF7 cells with RAB13 antibody (green) and DAPI nuclear stain (blue). HIER: steam section in pH6 citrate buffer for 20 min.



Western blot testing of human 1) HeLa, 2) Caco-2, 3) MCF7 and 4) 293T cell lysate with RAB13 antibody. Expected molecular weight: ~23 kDa.



Flow cytometry testing of human U-87 MG cells with RAB13 antibody at 1 ug/million cells (blocked with goat sera); Red=cells alone, Green=isotype control, Blue= RAB13 antibody.

Description

Ras-related protein Rab-13 is a protein that in humans is encoded by the RAB13 gene. This gene is a member of the Rab family of small G proteins and plays a role in regulating membrane trafficking between trans-Golgi network (TGN) and recycling endosomes (RE). The encoded protein is involved in the assembly of tight junctions, which are components of the apical junctional complex (AJC) of epithelial cells. The AJC plays a role in forming a barrier between luminal contents and the underlying tissue. Additional functions associated with the protein include endocytic recycling of occludin, regulation of epithelial cell scattering, neuronal regeneration and regulation of neurite outgrowth. Alternately spliced transcript variants have been observed for this gene. A pseudogene associated with this gene is located on chromosome 12.

Application Notes

Optimal dilution of the RAB13 antibody should be determined by the researcher.

Immunogen

Amino acids NKCDMEAKRKVQKEQADKLAREHGIRFFET of human RAB13 were used as the immunogen for the RAB13 antibody.

Storage

After reconstitution, the RAB13 antibody can be stored for up to one month at 4°C. For long-term, aliquot and store at -20°C. Avoid repeated freezing and thawing.