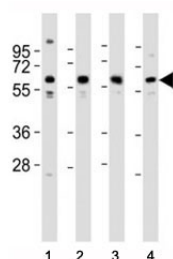


Pyruvate Kinase Antibody (F40139)

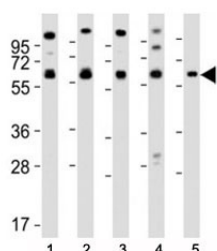
Catalog No.	Formulation	Size
F40139-0.4ML	In 1X PBS, pH 7.4, with 0.09% sodium azide	0.4 ml
F40139-0.08ML	In 1X PBS, pH 7.4, with 0.09% sodium azide	0.08 ml

[Bulk quote request](#)

Availability	1-3 business days
Species Reactivity	Human, Mouse
Predicted Reactivity	Rat, Rabbit
Format	Purified
Host	Rabbit
Clonality	Polyclonal (rabbit origin)
Isotype	Rabbit Ig
Purity	Purified
UniProt	P14618
Applications	Western Blot : 1:2000
Limitations	This Pyruvate Kinase antibody is available for research use only.



Western blot testing of Pyruvate Kinase antibody at 1:2000 dilution. Lane 1: MCF-7 lysate; 2: HeLa; 3: NIH3T3; 4: PC-12; Predicted molecular weight ~ 58 kDa.



Western blot testing of Pyruvate Kinase antibody at 1:2000 dilution. Lane 1: MCF-7 lysate; 2: HeLa; 3: THP-1; 4: NIH3T3; 5: PC-12; Predicted molecular weight ~ 58 kDa.

Description

PKM2 is a pyruvate kinase that catalyzes the production of phosphoenolpyruvate from pyruvate and ATP. This protein has been shown to interact with thyroid hormone, and thus may mediate cellular metabolic effects induced by thyroid hormones. This protein has been found to bind Opa protein, a bacterial outer membrane protein involved in gonococcal adherence to and invasion of human cells, suggesting a role of this protein in bacterial pathogenesis.

Application Notes

Titration of the Pyruvate Kinase antibody may be required due to differences in protocols and secondary/substrate sensitivity.

Immunogen

A portion of amino acids 121-151 from the human protein was used as the immunogen for this Pyruvate Kinase antibody.

Storage

Aliquot the Pyruvate Kinase antibody and store frozen at -20oC or colder. Avoid repeated freeze-thaw cycles.