

## PTPRF Antibody / LAR (R31936)

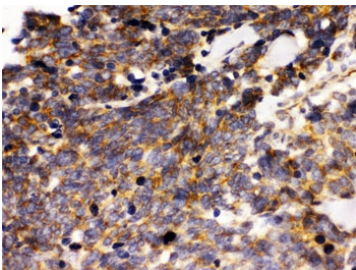
Catalog No.	Formulation	Size
R31936	0.5mg/ml if reconstituted with 0.2ml sterile DI water	100 ug

[Bulk quote request](#)

<b>Availability</b>	1-3 business days
<b>Species Reactivity</b>	Human
<b>Format</b>	Antigen affinity purified
<b>Host</b>	Rabbit
<b>Clonality</b>	Polyclonal (rabbit origin)
<b>Isotype</b>	Rabbit IgG
<b>Purity</b>	Antigen affinity
<b>Buffer</b>	Lyophilized from 1X PBS with 2.5% BSA and 0.025% sodium azide
<b>UniProt</b>	P10586
<b>Localization</b>	Cytoplasmic
<b>Applications</b>	Western Blot : 0.1-0.5ug/ml IHC (FFPE) : 0.5-1ug/ml
<b>Limitations</b>	This PTPRF antibody is available for research use only.



Western blot testing of human 1) HeLa, 2) A431 and 3) A549 cell lysate with PTPRF antibody. Observed molecular weight ~240 kDa.



IHC testing of FFPE human lung cancer tissue with PTPRF antibody. HIER: Boil the paraffin sections in pH 6, 10mM citrate buffer for 20 minutes and allow to cool prior to staining.

## Description

Receptor-type tyrosine-protein phosphatase F is an enzyme that in humans is encoded by the PTPRF gene. The protein encoded by this gene is a member of the protein tyrosine phosphatase (PTP) family. PTPs are known to be signaling molecules that regulate a variety of cellular processes including cell growth, differentiation, mitotic cycle, and oncogenic transformation. This PTP possesses an extracellular region, a single transmembrane region, and two tandem intracytoplasmic catalytic domains, and thus represents a receptor-type PTP. The extracellular region contains three Ig-like domains, and nine non-Ig like domains similar to that of neural-cell adhesion molecule. This PTP was shown to function in the regulation of epithelial cell-cell contacts at adherents junctions, as well as in the control of beta-catenin signaling. An increased expression level of this protein was found in the insulin-responsive tissue of obese, insulin-resistant individuals, and may contribute to the pathogenesis of insulin resistance. Two alternatively spliced transcript variants of this gene, which encode distinct proteins, have been reported.

## Application Notes

Optimal dilution of the PTPRF antibody should be determined by the researcher.

## Immunogen

Amino acids EQGGEEQRRRRRQAERLKPYYVAAQLDVLPEFTTLGDK of human PTPRF were used as the immunogen for the PTPRF antibody.

## Storage

After reconstitution, the PTPRF antibody can be stored for up to one month at 4oC. For long-term, aliquot and store at -20oC. Avoid repeated freezing and thawing.