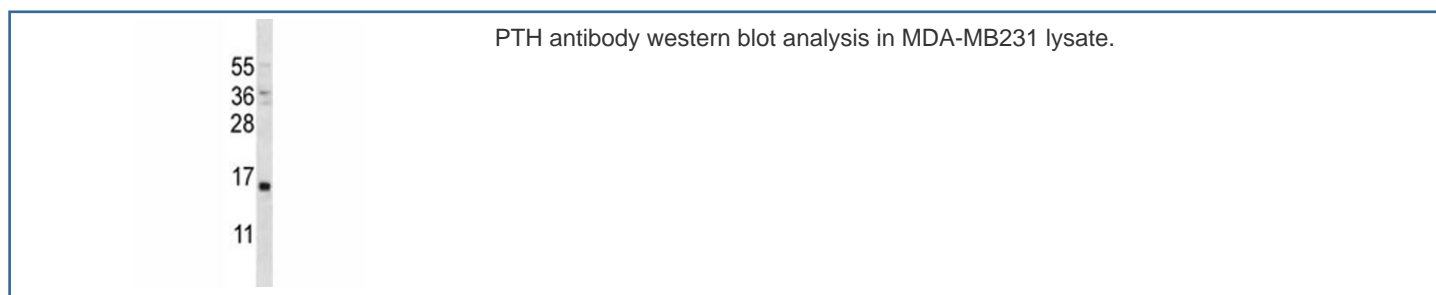


## PTH Antibody (F43171)

Catalog No.	Formulation	Size
F43171-0.4ML	In 1X PBS, pH 7.4, with 0.09% sodium azide	0.4 ml
F43171-0.08ML	In 1X PBS, pH 7.4, with 0.09% sodium azide	0.08 ml

[Bulk quote request](#)

<b>Availability</b>	1-3 business days
<b>Species Reactivity</b>	Human
<b>Predicted Reactivity</b>	Primate
<b>Format</b>	Antigen affinity purified
<b>Host</b>	Rabbit
<b>Clonality</b>	Polyclonal (rabbit origin)
<b>Isotype</b>	Rabbit Ig
<b>Purity</b>	Antigen affinity
<b>UniProt</b>	P01270
<b>Applications</b>	Western Blot : 1:1000
<b>Limitations</b>	This PTH antibody is available for research use only.



## Description

The protein encoded by this gene is a hormone secreted by parathyroid cells. This hormone elevates blood  $\text{Ca}^{2+}$  level by dissolving the salts in bone and preventing their renal excretion. Defects in this gene are a cause of familial isolated hypoparathyroidism (FIH).

## Application Notes

Titration of the PTH antibody may be required due to differences in protocols and secondary/substrate sensitivity.

## **Immunogen**

A portion of amino acids 59-88 from the human protein was used as the immunogen for this PTH antibody.

## **Storage**

Aliquot the PTH antibody and store frozen at -20oC or colder. Avoid repeated freeze-thaw cycles.