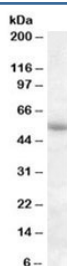


## PTGER3 Antibody (R34520)

Catalog No.	Formulation	Size
R34520-100UG	0.5 mg/ml in 1X TBS, pH7.3, with 0.5% BSA (US sourced) and 0.02% sodium azide	100 ug

[Bulk quote request](#)

Availability	1-3 business days
Species Reactivity	Human
Format	Antigen affinity purified
Clonality	Polyclonal (goat origin)
Isotype	Goat Ig
Purity	Antigen affinity
Gene ID	5733
Applications	Western Blot : 1-3ug/ml ELISA (peptide) LOD : 1:2000
Limitations	This PTGER3 antibody is available for research use only.



Western blot testing of human adipose lysate with PTGER3 antibody at 1ug/ml.  
Predicted molecular weight: ~50/47kDa.

## Description

Additional name(s) for this target protein: Prostaglandin E receptor 3, subtype EP3f

## Application Notes

Optimal dilution of the PTGER3 antibody should be determined by the researcher.

1. This PTGER3 antibody will detect isoforms 1/2/3.

## Immunogen

Amino acids KLLREPCSVQLS were used as the immunogen for this PTGER3 antibody. This sequence is specific to isoforms of 454 AA (BAA19955.1) and 425 AA (CAA58743.1).

## Storage

Aliquot and store the PTGER3 antibody at -20oC.