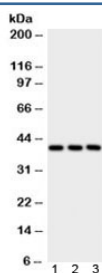


## PTGER2 Antibody (R32100)

Catalog No.	Formulation	Size
R32100	0.5mg/ml if reconstituted with 0.2ml sterile DI water	100 ug

[Bulk quote request](#)

<b>Availability</b>	1-3 business days
<b>Species Reactivity</b>	Human
<b>Format</b>	Antigen affinity purified
<b>Host</b>	Rabbit
<b>Clonality</b>	Polyclonal (rabbit origin)
<b>Isotype</b>	Rabbit IgG
<b>Purity</b>	Antigen affinity
<b>Buffer</b>	Lyophilized from 1X PBS with 2.5% BSA and 0.025% sodium azide
<b>UniProt</b>	P43116
<b>Applications</b>	Western Blot : 0.1-0.5ug/ml
<b>Limitations</b>	This PTGER2 antibody is available for research use only.



Western blot testing of human 1) placenta, 2) A549 and 3) HepG2 lysate with PTGER2 antibody. Expected/observed molecular weight: 40~53 kDa depending on glycosylation level.

### Description

Prostaglandin E2 receptor (53kDa), also known as EP2, is a prostaglandin receptor for prostaglandin E2. It is encoded by the human gene PTGER2. It may be associated with aspirin-induced asthma. PTGER2 is mapped to chromosome 14q22. This gene encodes a receptor for prostaglandin E2, a metabolite of arachidonic acid which has different biologic activities in a wide range of tissues. Mutations in this gene are associated with aspirin-induced susceptibility to asthma.

### Application Notes

Optimal dilution of the PTGER2 antibody should be determined by the researcher.

## **Immunogen**

Amino acids TIFAYMNETSSRKEKWDLQALRFLSINS of human PTGER2 were used as the immunogen for the PTGER2 antibody.

## **Storage**

After reconstitution, the PTGER2 antibody can be stored for up to one month at 4oC. For long-term, aliquot and store at -20oC. Avoid repeated freezing and thawing.