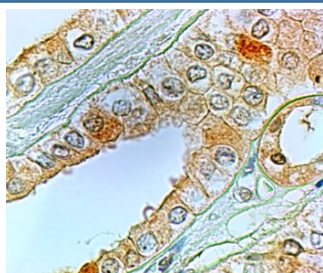


PTGER1 Antibody (R33644)

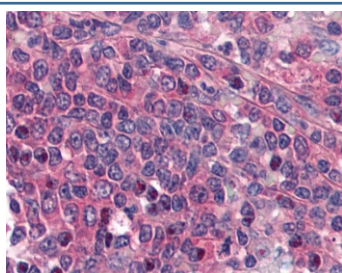
Catalog No.	Formulation	Size
R33644-100UG	0.5 mg/ml in 1X TBS, pH7.3, with 0.5% BSA (US sourced) and 0.02% sodium azide	100 ug

[Bulk quote request](#)

Availability	1-3 business days
Species Reactivity	Human
Format	Antigen affinity purified
Clonality	Polyclonal (goat origin)
Isotype	Goat Ig
Purity	Antigen affinity
Gene ID	5731
Applications	Immunohistochemistry (FFPE) : 1-5ug/ml ELISA (peptide) LOD : 1:128000
Limitations	This PTGER1 antibody is available for research use only.



IHC testing of FFPE human kidney with PTGER1 antibody at 2ug/ml. HIER: steamed with pH6 citrate buffer, HRP-staining.



IHC testing of FFPE human spleen tissue with PTGER1 antibody at 5ug/ml. Required HIER: steamed antigen retrieval with pH6 citrate buffer; AP-staining.

Description

Additional name(s) for this target protein: Prostaglandin E receptor 1

Application Notes

Optimal dilution of the PTGER1 antibody should be determined by the researcher.

Immunogen

Amino acids DSRRRWGAHGPRS were used as the immunogen for this PTGER1 antibody.

Storage

Aliquot and store the PTGER1 antibody at -20oC.