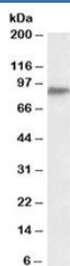


PTCHD3 Antibody (R34501)

Catalog No.	Formulation	Size
R34501-100UG	0.5 mg/ml in 1X TBS, pH7.3, with 0.5% BSA (US sourced) and 0.02% sodium azide	100 ug

[Bulk quote request](#)

Availability	1-3 business days
Species Reactivity	Human
Format	Antigen affinity purified
Clonality	Polyclonal (goat origin)
Isotype	Goat Ig
Purity	Antigen affinity
Gene ID	374308
Applications	Western Blot : 0.3-1ug/ml ELISA (peptide) LOD : 1:64000
Limitations	This PTCHD3 antibody is available for research use only.



Western blot testing of human testis lysate with PTCHD3 antibody at 0.3ug/ml. Predicted molecular weight: ~87kDa.

Description

Additional name(s) for this target protein: Patched domain containing 3

Application Notes

Optimal dilution of the PTCHD3 antibody should be determined by the researcher.

Immunogen

Amino acids KKVDYWDKDVRQ were used as the immunogen for this PTCHD3 antibody.

Storage

Aliquot and store the PTCHD3 antibody at -20oC.