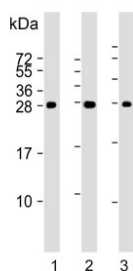


PSCA Antibody (F54284)

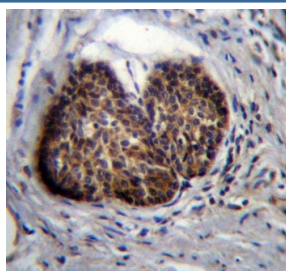
Catalog No.	Formulation	Size
F54284-0.4ML	In 1X PBS, pH 7.4, with 0.09% sodium azide	0.4 ml
F54284-0.08ML	In 1X PBS, pH 7.4, with 0.09% sodium azide	0.08 ml

Bulk quote request

Availability	1-3 business days
Species Reactivity	Human, Mouse
Format	Purified
Clonality	Polyclonal (rabbit origin)
Isotype	Rabbit Ig
Purity	Antigen affinity purified
UniProt	O43653
Applications	Western Blot : 1:500-1:2000 Immunohistochemistry (FFPE) : 1:25
Limitations	This PSCA antibody is available for research use only.



Western blot testing of mouse 1) kidney, 2) stomach and 3) liver lysate with PSCA antibody. Expected molecular weight: 13-29 kDa depending on glycosylation level.



IHC testing of FFPE human prostate carcinoma tissue with PSCA antibody. HIER: steam section in pH6 citrate buffer for 20 min and allow to cool prior to staining.

Description

PSCA is a glycosylphosphatidylinositol-anchored cell membrane glycoprotein. In addition to being highly expressed in the prostate it is also expressed in the bladder, placenta, colon, kidney, and stomach. It is up-regulated in a large proportion of prostate cancers and is also detected in cancers of the bladder and pancreas.

Application Notes

The stated application concentrations are suggested starting points. Titration of the PSCA antibody may be required due to differences in protocols and secondary/substrate sensitivity.

Immunogen

A portion of amino acids 56-85 from the human protein were used as the immunogen for the PSCA antibody.

Storage

Aliquot the PSCA antibody and store frozen at -20oC or colder. Avoid repeated freeze-thaw cycles.