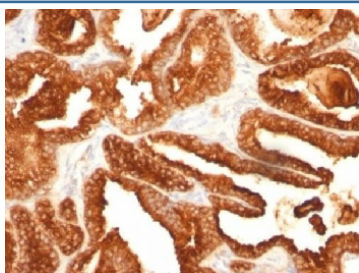


PSAP Antibody [clone SPM312] (V3315)

Catalog No.	Formulation	Size
V3315-100UG	0.2 mg/ml in 1X PBS with 0.1 mg/ml BSA (US sourced) and 0.05% sodium azide	100 ug
V3315-20UG	0.2 mg/ml in 1X PBS with 0.1 mg/ml BSA (US sourced) and 0.05% sodium azide	20 ug
V3315SAF-100UG	1 mg/ml in 1X PBS; BSA free, sodium azide free	100 ug

[Bulk quote request](#)

Species Reactivity	Human
Format	Purified
Clonality	Monoclonal (mouse origin)
Isotype	Mouse IgG1, kappa
Clone Name	SPM312
Purity	Protein G affinity chromatography
UniProt	P15309
Gene ID	55
Localization	Cytoplasmic
Applications	Immunohistochemistry (FFPE) : 1-2ug/ml for 30 min at RT
Limitations	This PSAP antibody is available for research use only.



IHC testing of human prostate carcinoma with PSAP antibody (clone SPM312). Required HIER: boil tissue sections in pH 9 10mM Tris with 1mM EDTA for 10-20 min followed by cooling at RT for 20 min.

Description

Prostate specific acid phosphatase (PSAP) is an enzyme that catalyzes the conversion of orthophosphoric monoester to alcohol and orthophosphate. It is synthesized under androgen regulation and is secreted by the epithelial cells of the

prostate gland. PSAP is found in non-neoplastic adult and fetal prostatic glands, primary and metastatic prostatic carcinomas. It shows no staining in granulocytes, osteoclasts, parietal cells of the stomach, liver cells, renal cell or breast carcinomas.

Application Notes

Titration of the PSAP antibody may be required for optimal performance.

Immunogen

PSAP purified from human seminal plasma was used as the immunogen for this PSAP antibody.

Storage

The PSAP antibody (with azide) can be stored at 2-8°C. The azide-free format should be aliquoted and stored at -20°C or colder.