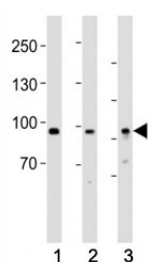


## PROX1 Antibody / Prospero homeobox 1 (F53186)

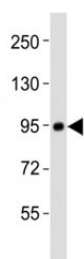
Catalog No.	Formulation	Size
F53186-0.4ML	In 1X PBS, pH 7.4, with 0.09% sodium azide	0.4 ml
F53186-0.08ML	In 1X PBS, pH 7.4, with 0.09% sodium azide	0.08 ml

[Bulk quote request](#)

<b>Availability</b>	1-3 business days
<b>Species Reactivity</b>	Human, Mouse
<b>Format</b>	Antigen affinity purified
<b>Host</b>	Rabbit
<b>Clonality</b>	Polyclonal (rabbit origin)
<b>Isotype</b>	Rabbit Ig
<b>Purity</b>	Antigen affinity
<b>UniProt</b>	Q92786
<b>Applications</b>	Western Blot : 1:1000-2000
<b>Limitations</b>	This PROX1 antibody is available for research use only.



Western blot testing of PROX1 antibody at 1:1000 dilution. Lane 1: human heart lysate; 2: mouse brain lysate; 3: HepG2 lysate; Predicted molecular weight is 83 kDa, observed at 80-110 kDa.



Western blot testing of PROX1 antibody at 1:2000 dilution + SH-SY5Y lysate

## Description

Transcription factor involved in developmental processes such as cell fate determination, gene transcriptional regulation and progenitor cell regulation in a number of organs. Plays a critical role in embryonic development and functions as a key regulatory protein in neurogenesis and the development of the heart, eye lens, liver, pancreas and the lymphatic system. Involved in the regulation of the circadian rhythm. Represses: transcription of the retinoid-related orphan receptor ROR $\gamma$ , transcriptional activator activity of ROR $\alpha$  and ROR $\gamma$  and the expression of ROR $\alpha$ /G-target genes including core clock components: ARNTL/BMAL1, NPAS2 and CRY1 and metabolic genes: AVPR1A and ELOVL3.

## Application Notes

Titration of the PROX1 antibody may be required due to differences in protocols and secondary/substrate sensitivity.

## Immunogen

This PROX1 antibody was produced from a rabbit immunized with a KLH conjugated synthetic peptide between 444-478 amino acids from the Central region of human PROX1.

## Storage

Aliquot the PROX1 antibody and store frozen at -20oC or colder. Avoid repeated freeze-thaw cycles.